



# Introduction to ICD-11

Dr Robert JAKOB

WHO, Geneva

[icd.who.int](http://icd.who.int)



# ICD-11 – Global Information Standard

- **Common language in health information**
- **Independent of language and culture**
- **Integration of terminology and classification**
- **Legally mandated by international law**

(International Nomenclature Regulations)

- **Adopted by all countries in 2019**
- **In effect from January 2022**

# ICD-11 Value Proposition

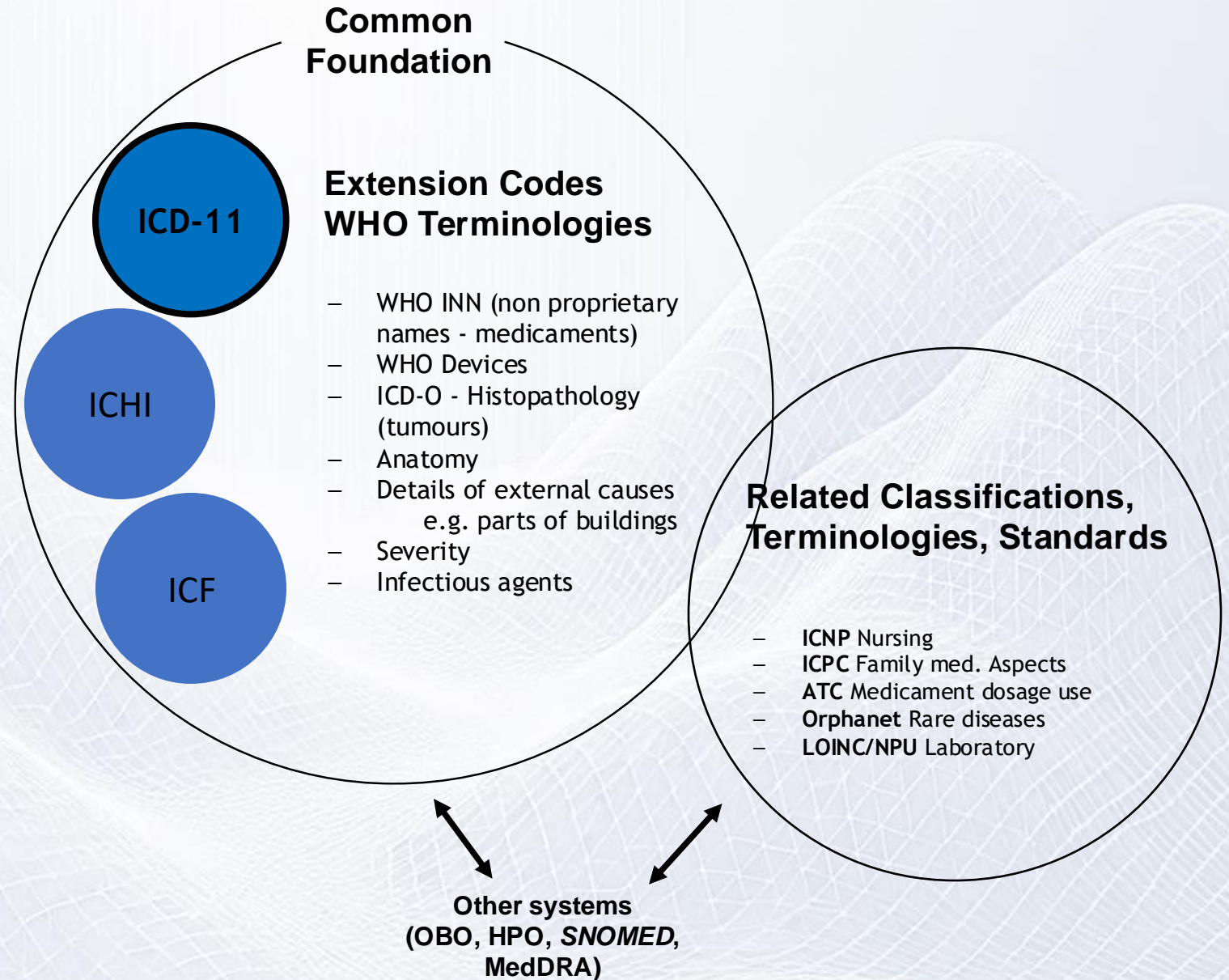
- **Scientifically up-to-date – epidemiology, clinical and research**
- **Easy to use - save on training, coding time, coding software**
  - NLP
  - Expandable lists of synonyms, foundation, postcoordination
  - Online / offline software integration - API
- **Digital ready - Multilingual - International – software re-usable in multiple settings**
  - Standard encoding
  - Uniform API (FHIR and other)
  - Online / **offline** use



# ICD-11 Value Proposition

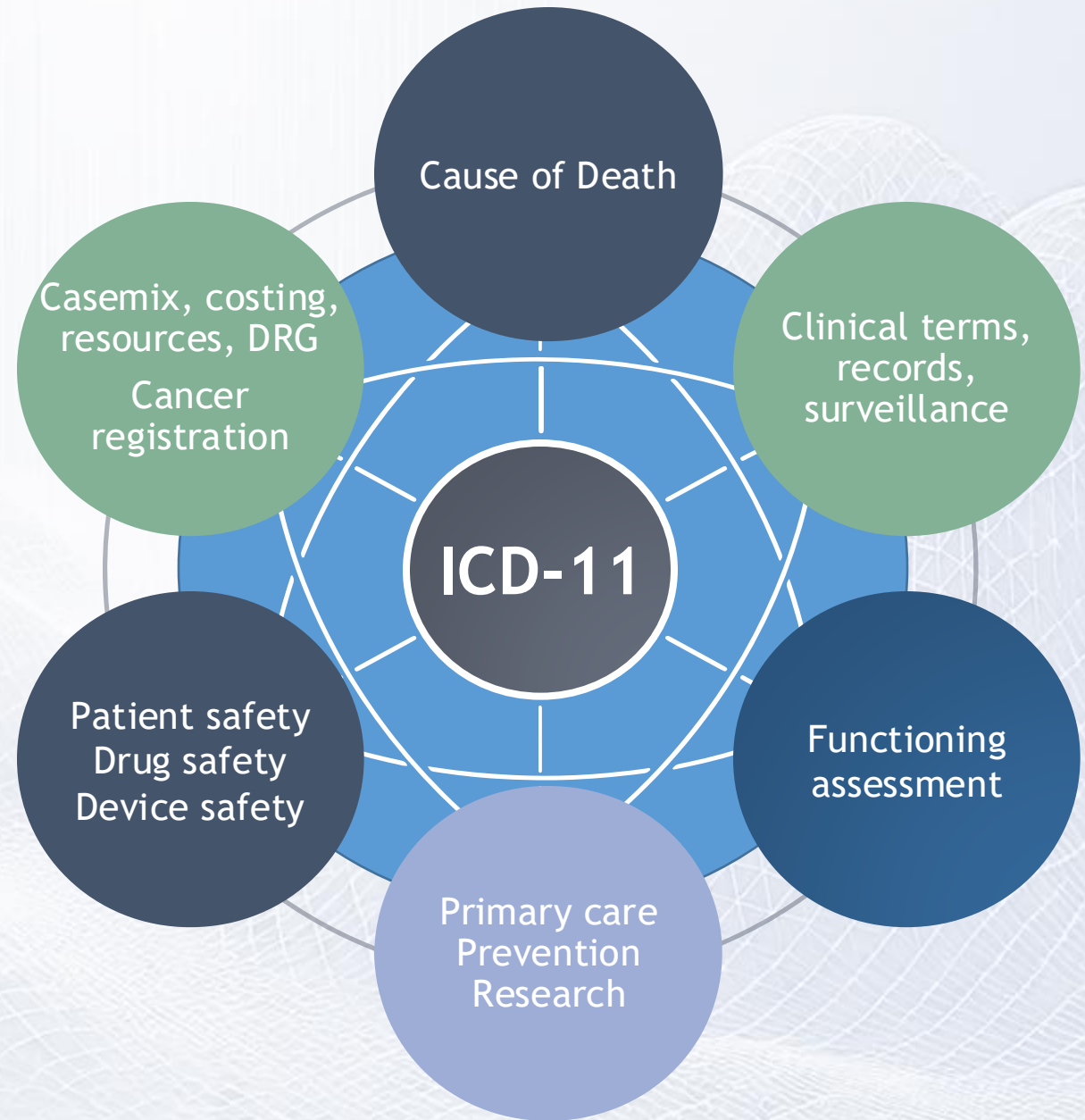
- **Accurate detail - record once – reuse for multiple purposes**
  - Clinical terms
  - Safety reporting: Devices, medicaments, safety events, antimicrobial resistance
  - Detail from clinical modifications included
- **Free use – including coding tools – save costs**
  - Free for commercial and non-commercial uses
- **Online maintenance – share maintenance workload – easy to update**
  - Open access
  - Open processes

# The WHO Family of International Classifications (WHO-FIC)

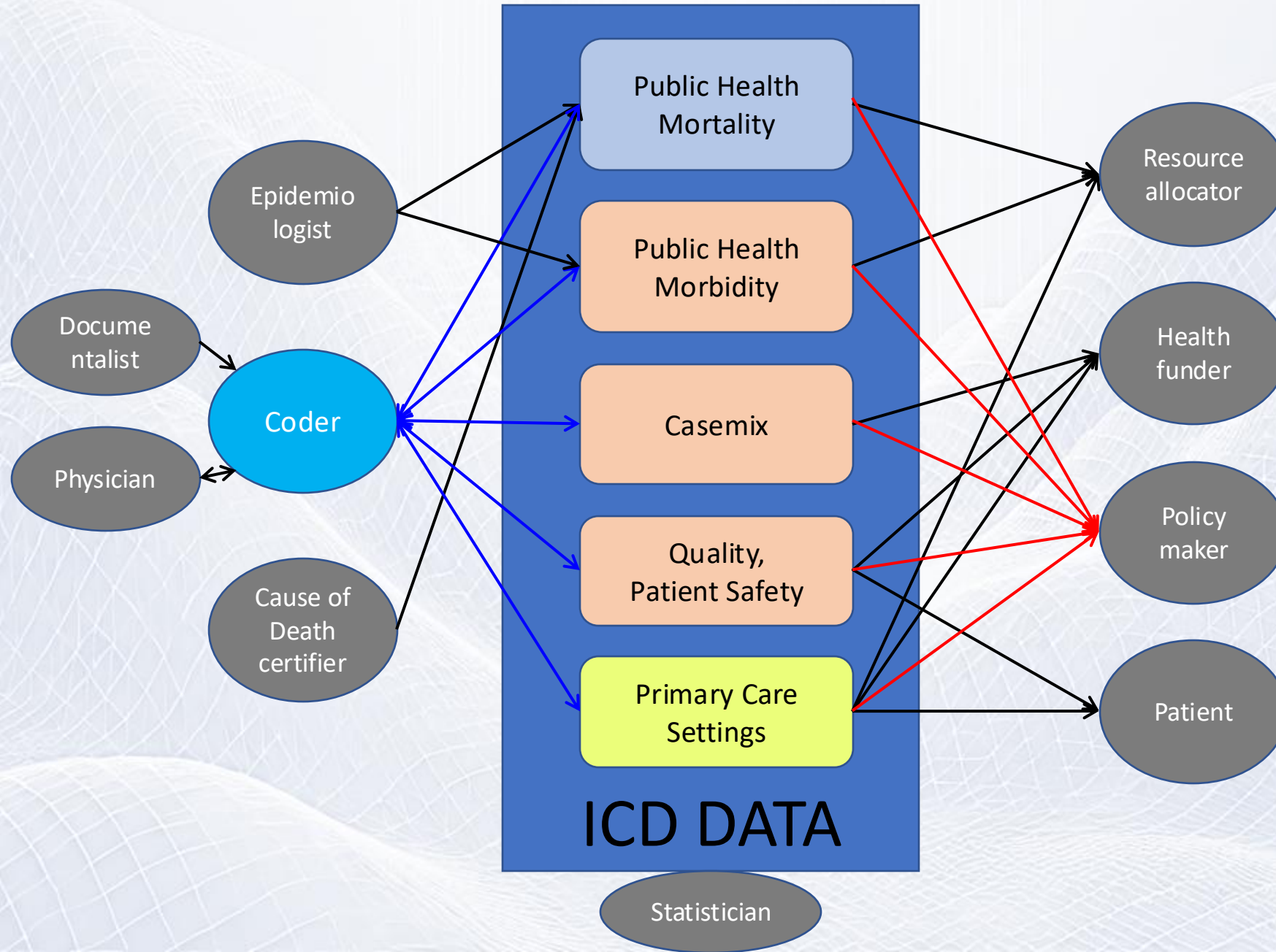




# ICD-11 designed for multiple uses



## ICD users, and uses



## A Patient's path

Person worried, feels increasingly sick; some infection is circulating

**ICD-11** Code the worry of the patient

Data inform planning of prevention

Practitioner identifies febrile viral infection

**ICD-11** Code reason for encounter - infection

Data inform resource planning and epidemiology

Severity increases and referral to secondary care, intensive care, COVID-19 identified

**ICD-11** Code reason for stay – COVID-19

**ICHI** Code therapies

Data inform resource planning, DRG, service availability and epidemiology

Family members are checked for contagion

**ICD-11** COVID-19 excluded

**ICHI** Code diagnostic test

Data inform epidemiology, coding, service availability



## A Patient's path

A near incident occurs at the intensive care unit (failure infusion pump)

**ICD-11** Code failure pump, no harm to patient

Data inform patient safety and quality monitoring, device safety monitoring, costing

Recovery requires physiotherapy

**ICD-11** Code and assess functioning score

**ICF** Code specific functioning

**ICHI** Code physiotherapy

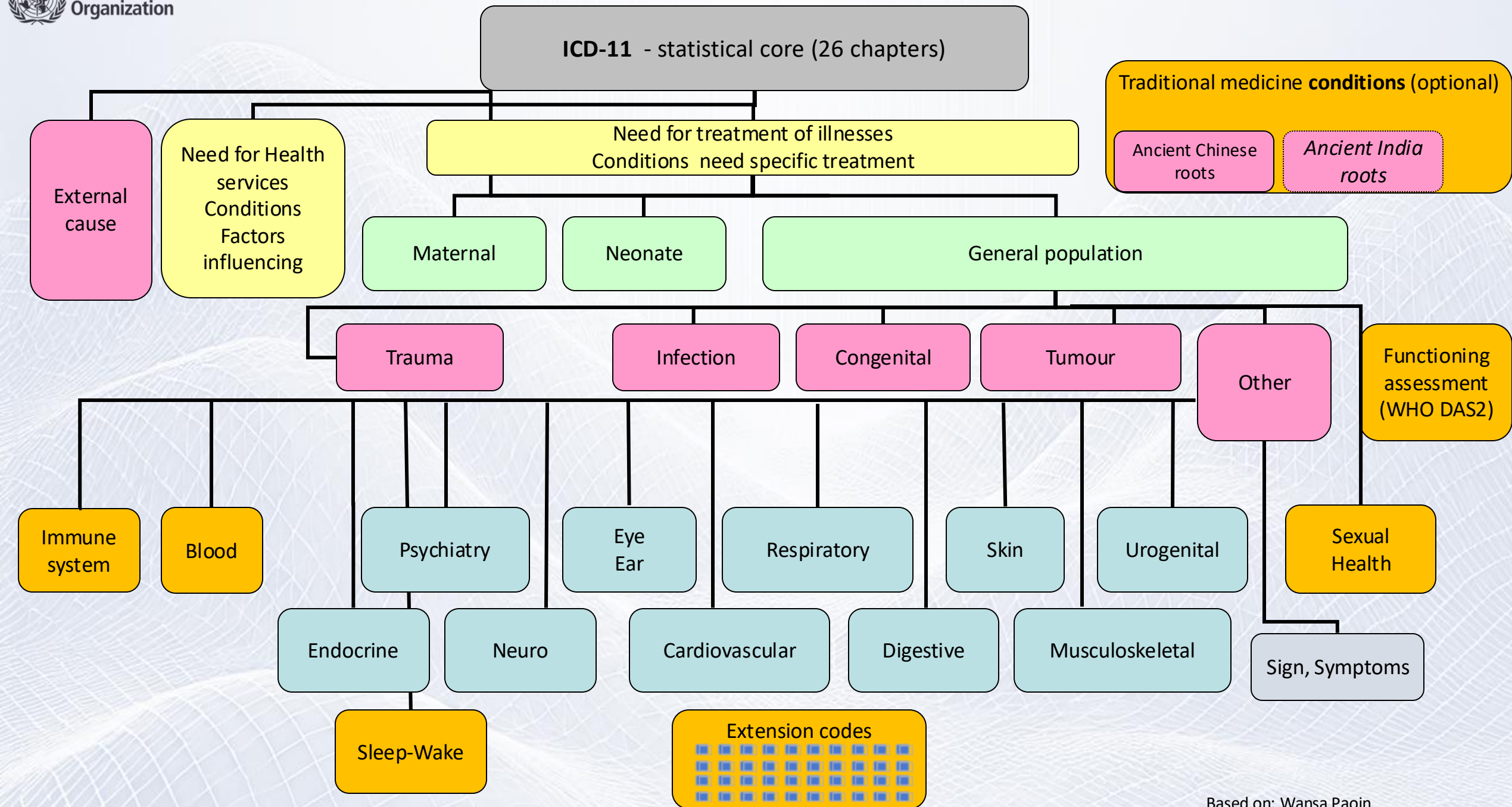
Data inform costing, DRG, service availability, resource planning, impact of services

Fitness has improved and the person is back to work

**ICD-11** Code and assess functioning score

**ICF** Code specific functioning

Data inform social insurance, rehabilitation and reintegration

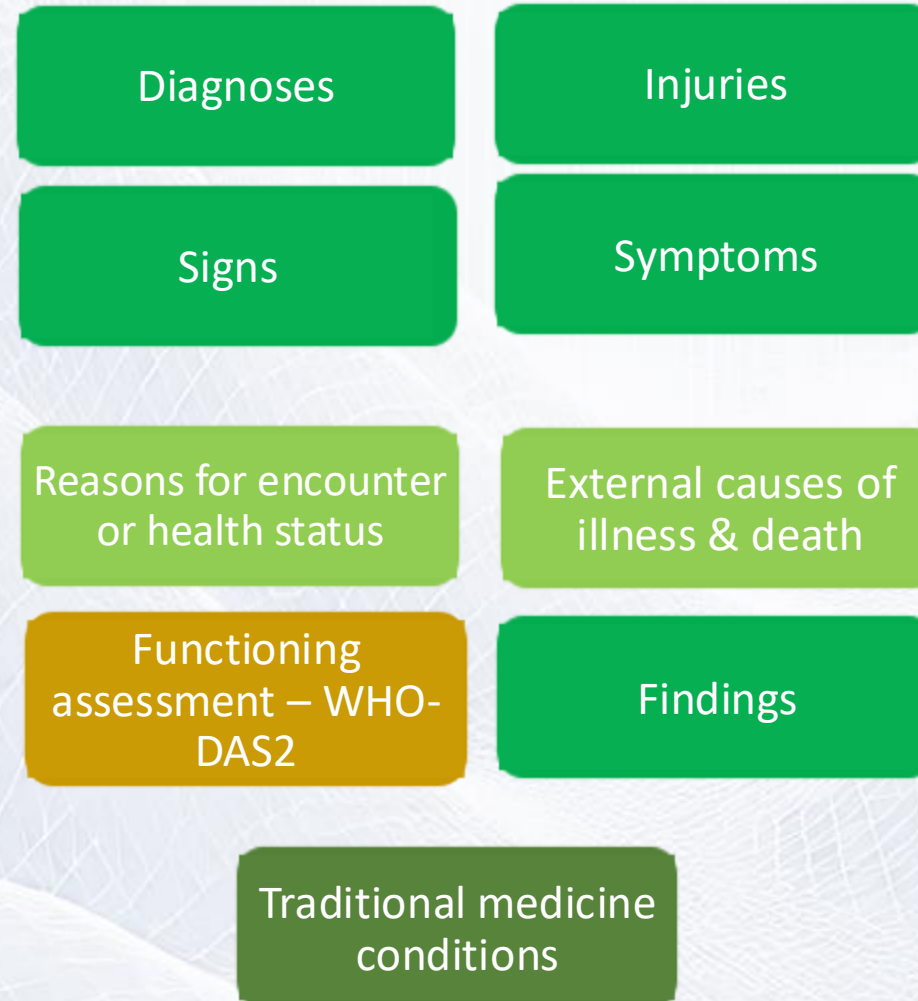




# ICD-11

## More than diagnoses

### Conditions - Classification



### Extension codes - Terminology

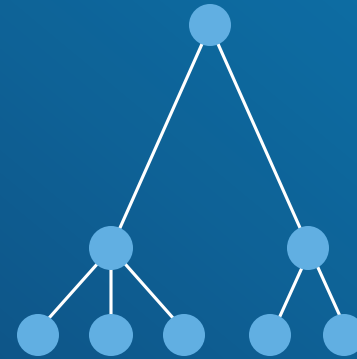


# ICD-10

**Statistical system imposed  
for clinical use**

Primitive structure with focus  
on statistics.

Missing a lot of clinical detail  
Print product



Codes and URI  
Combinations:

**14 000**

stat. categories (codes)

---

Separate text index

---

Separate rule base

---

Need terminology link

---

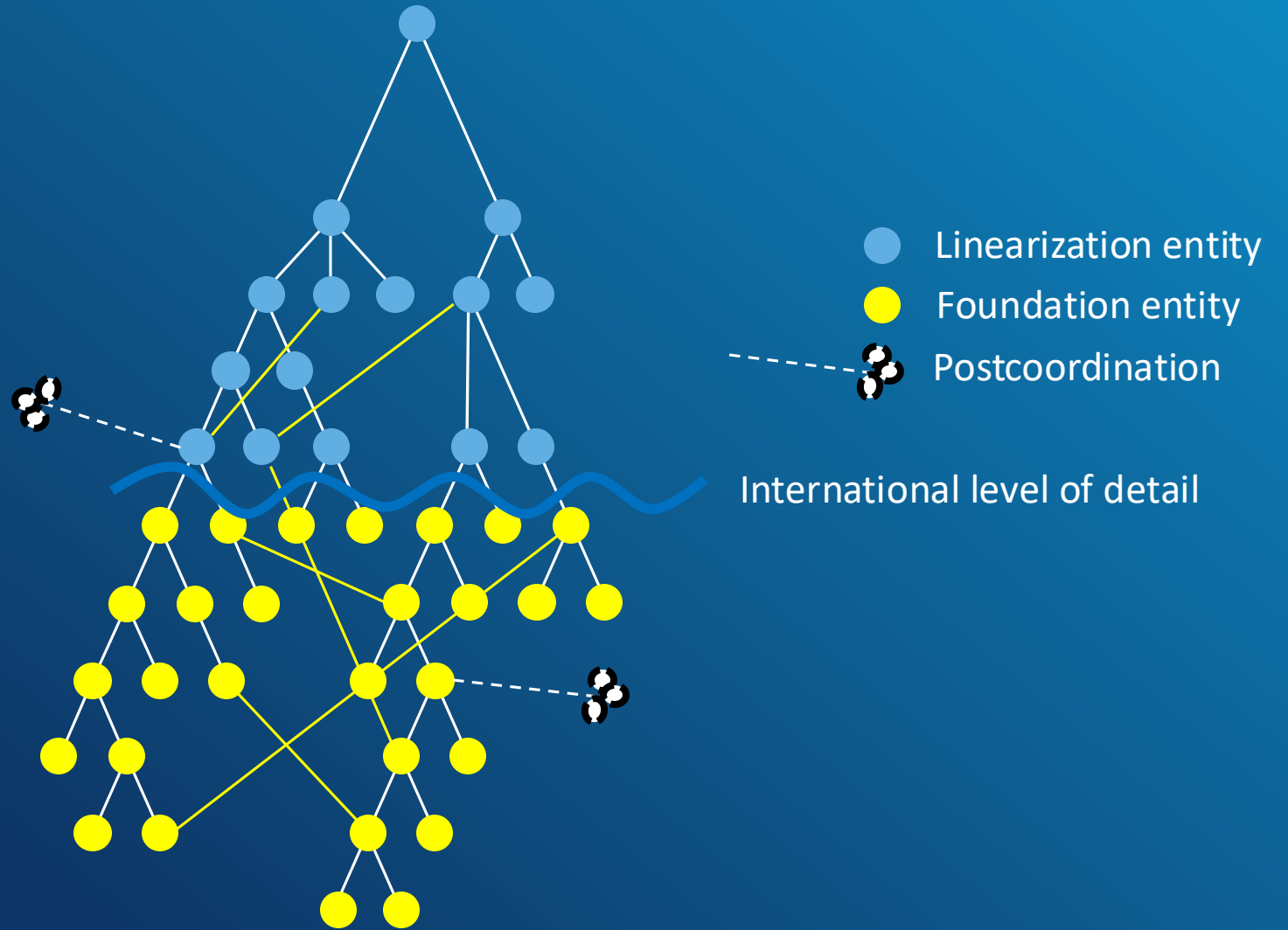
30 years outdated content



# ICD-11

Common core for all

Use Jointly

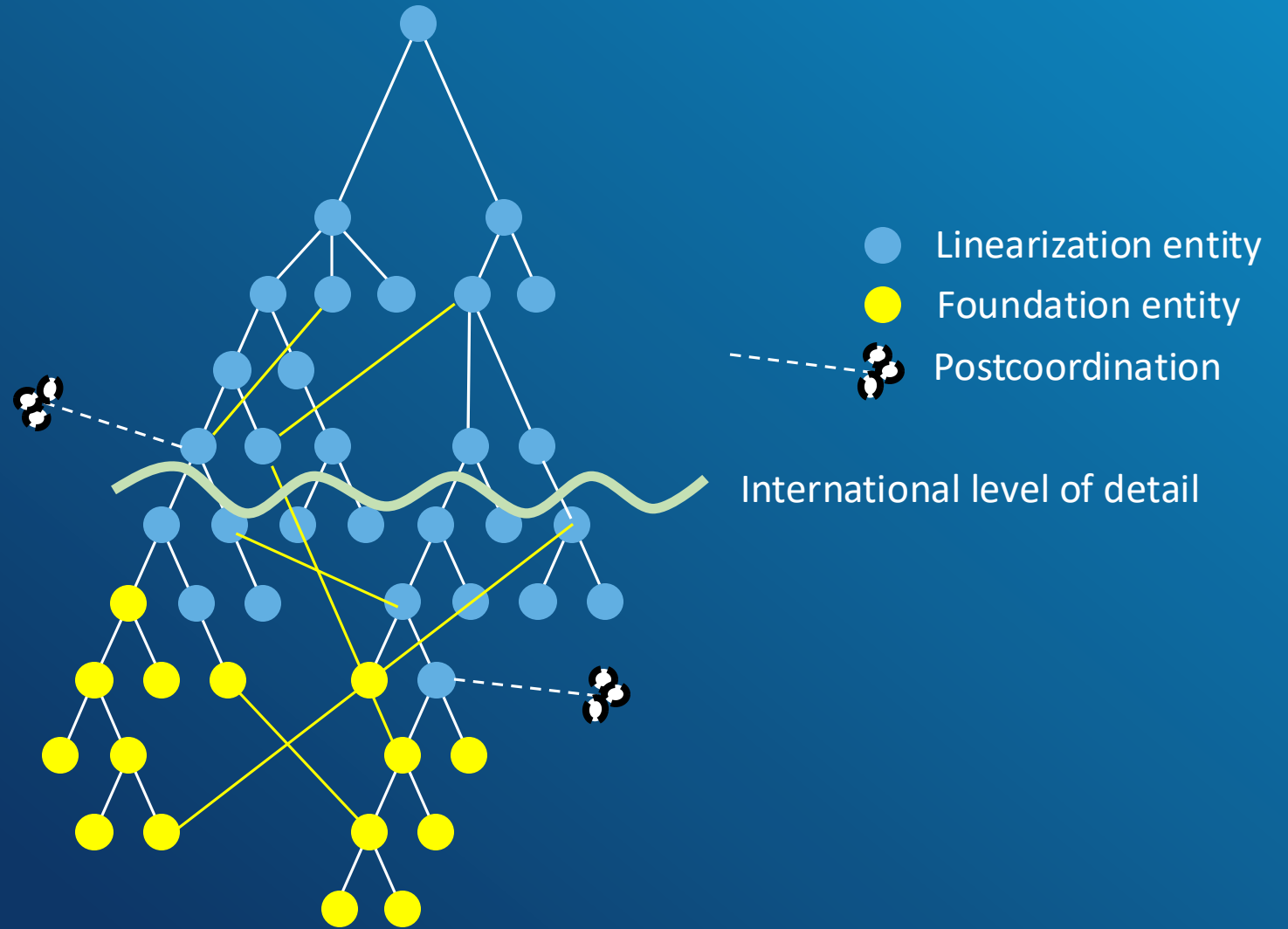


# ICD-11

Common core for all

Increased coding depth for  
national purposes?

Use Jointly





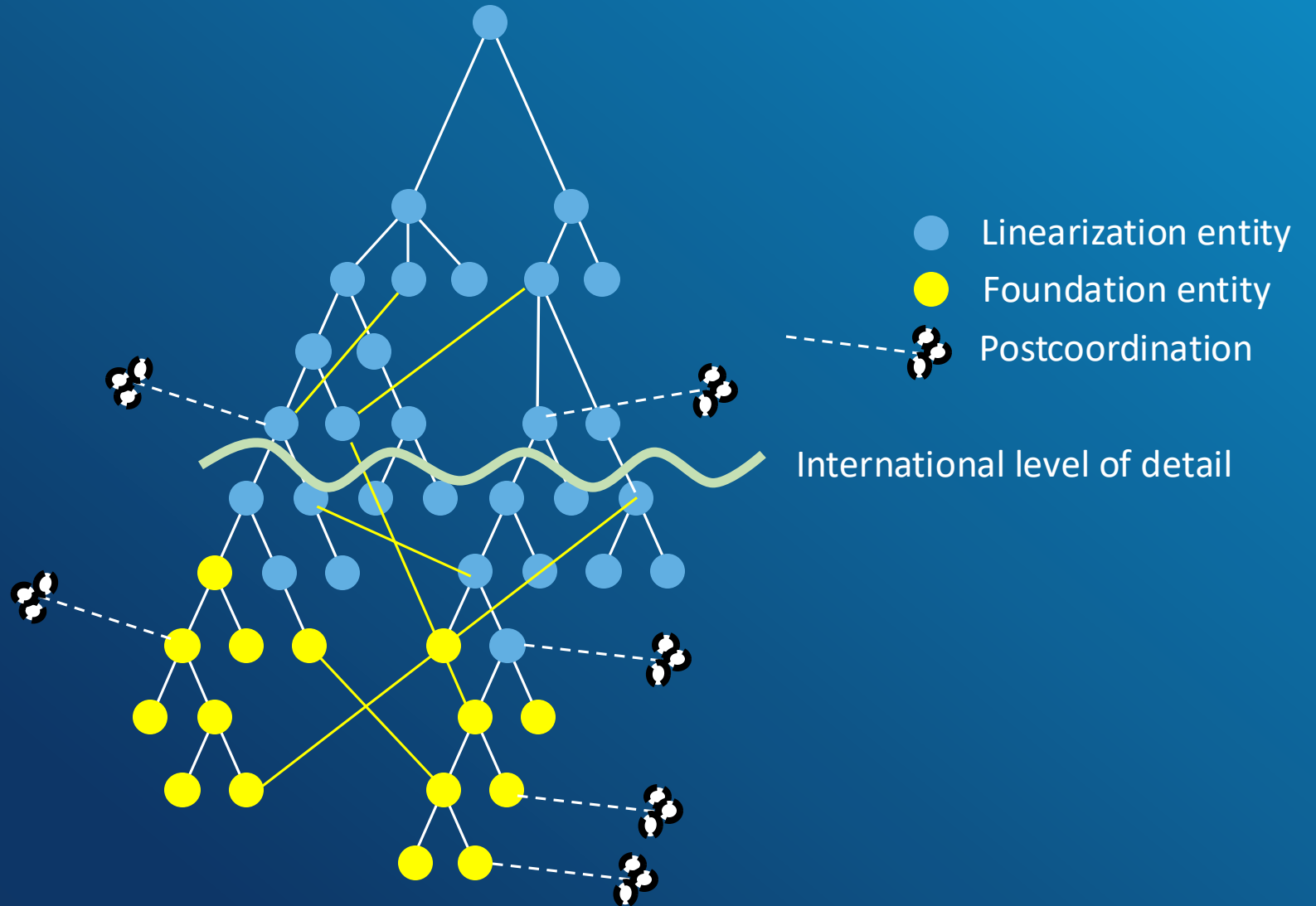
# ICD-11

Common core for all

Increased coding depth

Additional postcoordination

Use Jointly



# ICD-11

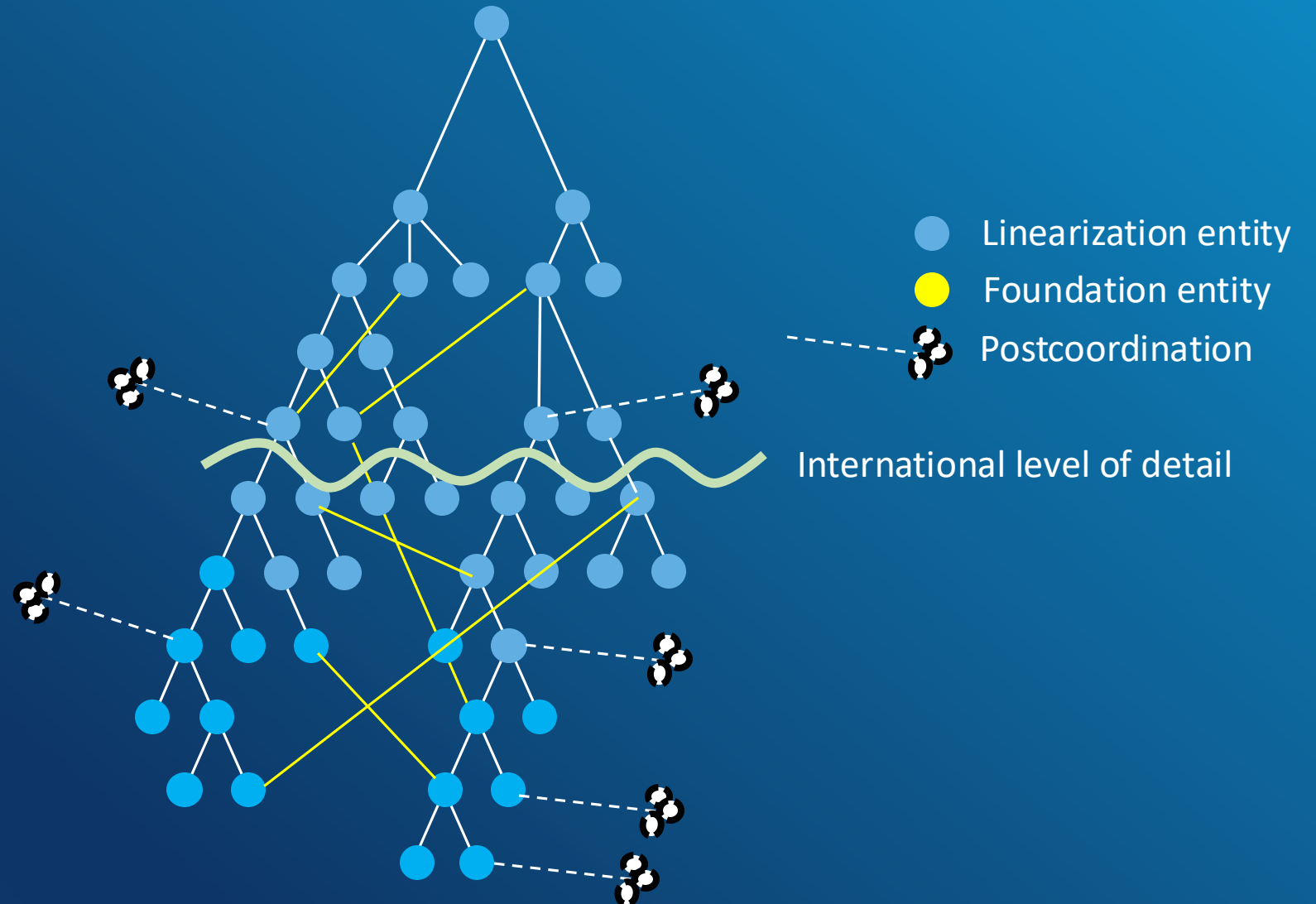
**Common core for all**

**Ultimate coding depth**

**Added postcoordination**

**for example ability to code rare diseases**

**Use Jointly**





# ICD-11

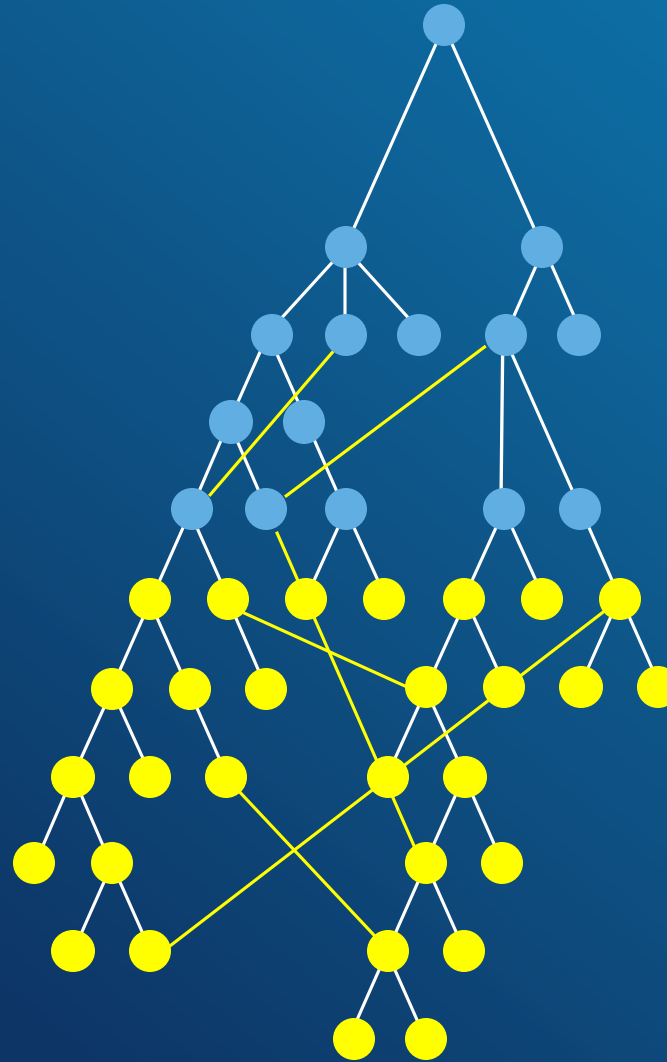
## Clinical system for statistical use

Ontology with multiple parenting

**All desired clinical detail codable**  
**Use code combinations**

More detail beyond statistical categories (foundation in yellow)

**Input from clinical modifications of ICD-10**



### Codes and URI Combinations:

**17 000**

stat. categories (codes)

**80 000**

entities

**120 000**

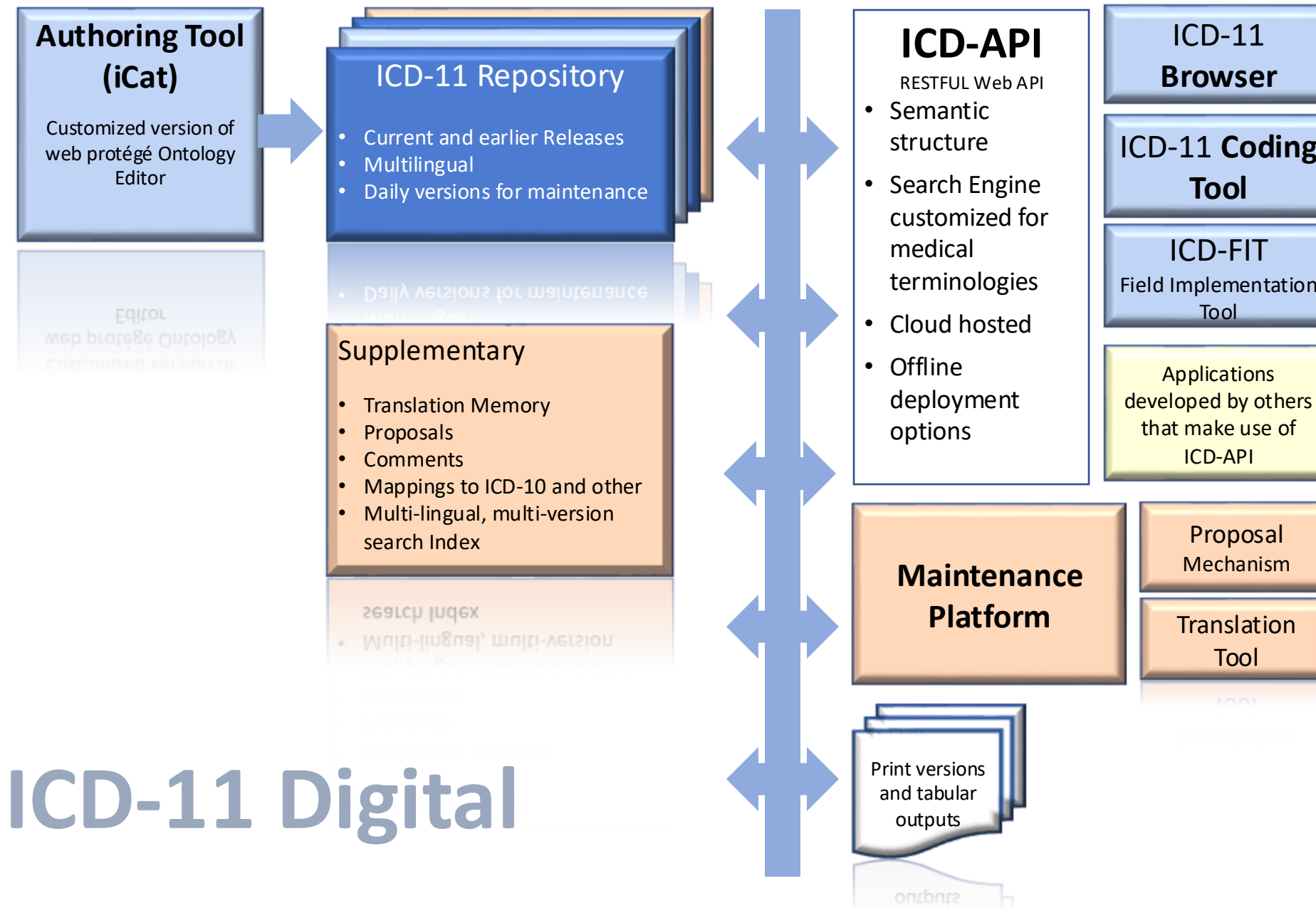
terms

**>2 000 000**

terms with formalized code combinations

**>100 000 000**

terms with freely chosen code combinations

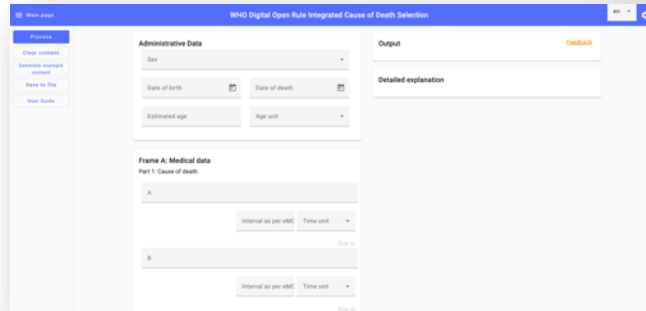




01

*API integration*

02

*Web VERSION*A screenshot of a web application interface titled "WHO Digital Open Rule Integrated Cause of Death Selection". The interface has a blue header bar with the title and a "Help" icon. On the left, there is a sidebar with a "Process" button and a "Feedback" link. The main content area is divided into sections: "Administrative Data" with fields for "Sex", "Date of birth", "Date of death", "Estimated age", and "Age unit"; "Frame A: Medical data" with a "Part 1: Cause of death" section containing a text input field "A" and a "Time unit" dropdown; and "Output" with a "Detailed explanation" section. A "Feedback" link is also present in the top right corner.

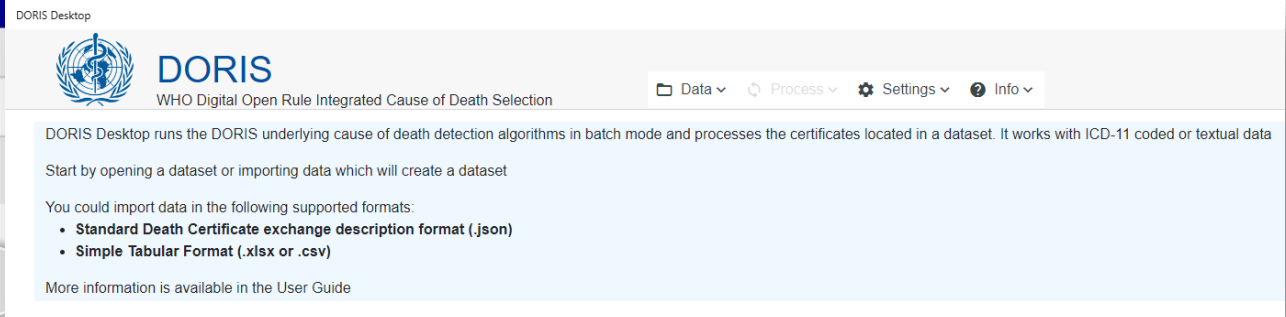
API= Application Programming Interface = where software talks with ICD

03

*Desktop VERSION***ICD-11 Coding Tool**

Mortality and Morbidity Statistics (MMS)  
2025-01

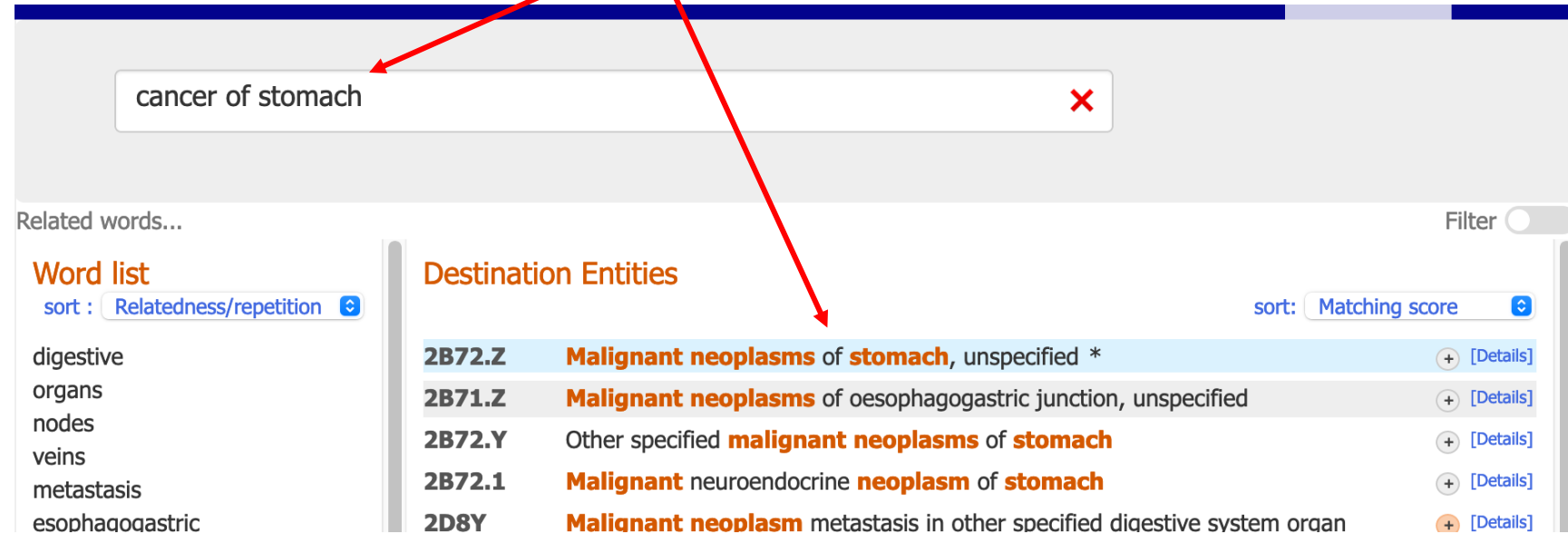
Type for starting the search

[icd.who.int](https://icd.who.int)[icd.who.int/doris](https://icd.who.int/doris)

Type a diagnostic statement into the Coding Tool

e.g. *cancer of stomach*

Easy coding



The screenshot shows the WHO Coding Tool interface. At the top, a search bar contains the text "cancer of stomach" with a red 'X' icon to its right. Below the search bar, there are two main sections: "Related words..." and "Destination Entities".

**Related words...**

Word list  
sort : Relatedness/repetition

- digestive
- organs
- nodes
- veins
- metastasis
- esophagoaastic

**Destination Entities**

sort: Matching score

2B72.Z	Malignant neoplasms of stomach, unspecified *	[+]	[Details]
2B71.Z	Malignant neoplasms of oesophagogastric junction, unspecified	[+]	[Details]
2B72.Y	Other specified malignant neoplasms of stomach	[+]	[Details]
2B72.1	Malignant neuroendocrine neoplasm of stomach	[+]	[Details]
2D8Y	Malignant neoplasm metastasis in other specified digestive system organ	[+]	[Details]

The Coding Tool will find the best match



# Coding Tool

## ICD-11 Coding Tool

Mortality and Morbidity Statistics (MMS)  
2025-01

Help

hypertension |



Related words...

The results shown are incomplete



Filter



### Word list

sort :

Relatedness/repetition ▾

vascular  
accelerated  
insufficiency  
degeneration  
myocardial  
ocular

### Destination Entities

sort: Matching score ▾

**BA00.Z** Essential **hypertension**, unspecified  
**hypertension** NOS \*

+ J K [Details]

**9C61.01** Ocular **hypertension**

+ [Details]

**BB01.Z** Pulmonary **hypertension**, unspecified

J K [Details]

**JA23** Gestational **hypertension**

+ [Details]

# Coding Tool

ICD-10

Related words

Word list

sort :

Relatedness

vascular

accelerated

insufficient

degenerative

myocardial

ocular

BA00.Z Essential **hypertension**, unspecified

## Matching Terms

## Postcoordination

**hypertension** NOS \*

Essential **hypertension**, unspecified

Systemic **hypertension**

primary **hypertension**

vascular **hypertension**

[Show all \[34\]](#) ▼

## Related categories in maternal chapter J

Pre-existing essential hypertension complicating pregnancy, childbirth or the puerperium /  
Essential hypertension, unspecified ([JA20.0/BA00.Z](#))

## Related categories in perinatal chapter K

Neonatal hypertension ([KB45](#))

[↑](#) [See in hierarchy](#)



# ICD-11 Coding Tool

Mortality and Morbidity Statistics (MMS)  
2024-01

Help

Type for starting the search



## User Guide



Searching

Integrated browser

Postcoordination

Coding Note

Related categories in maternal chapter

Related categories in perinatal chapter

## Searching

The Coding Tool works by searching as the user continues typing in the searchbox:

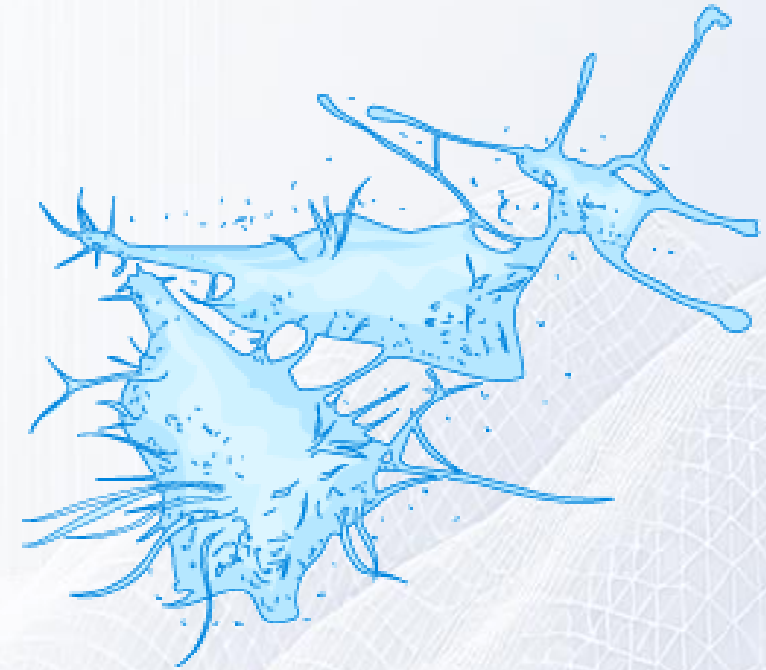
Type for starting the search



Coding Tool generates (and dynamically updates) two different outputs as the search continues:

## Chapter 02 – Neoplasms

- Generally, the hierarchy :
  - Behaviour;
    - Broad sites or systems;
      - the specific site or morphological (histology) type
- Three exceptions to this hierarchy:
  1. Neoplasms of brain and central nervous system 1<sup>st</sup> level is broad sites
  2. Neoplasms of haematopoietic and lymphoid tissues where 1<sup>st</sup> level is broad morphological (histology) type
  3. Malignant mesenchymal neoplasms where 1<sup>st</sup> level is specific morphological (histology) type







# The Clinical Descriptions and Diagnostic Requirements (CDDR) for ICD-11 Mental, Behavioural or Neurodevelopmental Disorders

## Chapter 6

### ICD-11 for Mortality and Morbidity Statistics (Version : 02/2022)

EN

Search

[ Advanced Search ]

Browse

Coding Tool

Special Views

Info

#### ICD-11 for Mortality and Morbidity Statistics

- ▶ 01 Certain infectious or parasitic diseases
- ▶ 02 Neoplasms
- ▶ 03 Diseases of the blood or blood-forming organs
- ▶ 04 Diseases of the immune system
- ▶ 05 Endocrine, nutritional or metabolic diseases
- ▼ 06 Mental, behavioural or neurodevelopmental disorders

- ▶ Neurodevelopmental disorders
- ▼ Schizophrenia or other primary psychotic disorders

- ▶ 6A20 Schizophrenia
- ▶ 6A21 Schizoaffective disorder
- ▶ 6A22 Schizotypal disorder
- ▶ 6A23 Acute and transient psychotic disorder
- ▶ 6A24 Delusional disorder
- ▶ 6A25 Symptomatic manifestations of primary psychotic disorders
- ▶ Substance-induced psychotic disorders
- ▶ 6E61 Secondary psychotic syndrome
- ▶ 6A2Y Other specified primary psychotic disorder
- ▶ 6A2Z Schizophrenia or other primary psychotic disorders, unspecified

- ▶ Catatonia
- ▶ Mood disorders
- ▶ Anxiety or fear-related disorders
- ▶ Obsessive-compulsive or related disorders
- ▶ Disorders specifically associated with stress
- ▶ Dissociative disorders
- ▶ Feeding or eating disorders
- ▶ Elimination disorders

6A25.4 Psychomotor symptoms in primary psychotic disorders  
6A25.5 Cognitive symptoms in primary psychotic disorders

#### Diagnostic Requirements

##### Essential (Required) Features:

- At least two of the following symptoms must be present (by the individual's report or through observation by the clinician or other informants) most of the time for a period of 1 month or more. At least one of the qualifying symptoms should be from item a) through d) below:
  - a. Persistent delusions (e.g., grandiose delusions, delusions of reference, persecutory delusions).
  - b. Persistent hallucinations (most commonly auditory, although they may be in any sensory modality).
  - c. Disorganized thinking (formal thought disorder) (e.g., tangentiality and loose associations, irrelevant speech, neologisms). When severe, the person's speech may be so incoherent as to be incomprehensible ('word salad').
  - d. Experiences of influence, passivity or control (i.e., the experience that one's feelings, impulses, actions or thoughts are not generated by oneself, are being placed in one's mind or withdrawn from one's mind by others, or that one's thoughts are being broadcast to others).
  - e. Negative symptoms such as affective flattening, alogia or paucity of speech, avolition, asociality and anhedonia.
  - f. Grossly disorganized behaviour that impedes goal-directed activity (e.g., behaviour that appears bizarre or purposeless, unpredictable or inappropriate emotional responses that interferes with the ability to organize behaviour).
  - g. Psychomotor disturbances such as catatonic restlessness or agitation, posturing, waxy flexibility, negativism, mutism, or stupor. Note: If the full syndrome of Catatonia is present in the context of Schizophrenia, the diagnosis of Catatonia Associated with Another Mental Disorder should also be assigned.
- The symptoms are not a manifestation of another medical condition (e.g., a brain tumour) and are not due to the effects of a substance or medication (e.g., corticosteroids) on the central nervous system, including withdrawal effects (e.g., from alcohol).

##### Course specifiers for Schizophrenia:

The following specifiers should be applied to identify the course of Schizophrenia, including whether the individual currently meets the diagnostic requirements of Schizophrenia or is in partial or full remission. Course specifiers are also used to indicate whether the current episode is the first episode of Schizophrenia, whether there have been multiple such episodes, or whether symptoms have been continuous over an extended period of time.

# Coding options for “stroke”

## Size of artery and intracranial vs extracranial

- 8B11.0 Cerebral ischaemic stroke due to extracranial large artery atherosclerosis
- 8B11.1 Cerebral ischaemic stroke due to intracranial large artery atherosclerosis
- 8B11.2 Cerebral ischaemic stroke due to embolic occlusion
- 8B11.20 Cerebral ischaemic stroke due to cardiac embolism

## Laterality (use additional code, if desired)

- • XK9J Bilateral
- • XK8G Left
- • XK9K Right
- • XK70 Unilateral, unspecified

## Specific anatomy (use additional code, if desired)

- • XA13S2 Cerebral artery
- • XA1VB0 Anterior cerebral artery
- • XA2K99 Basilar artery
- • XA3185 Pontine branches of the basilar artery
- • ...

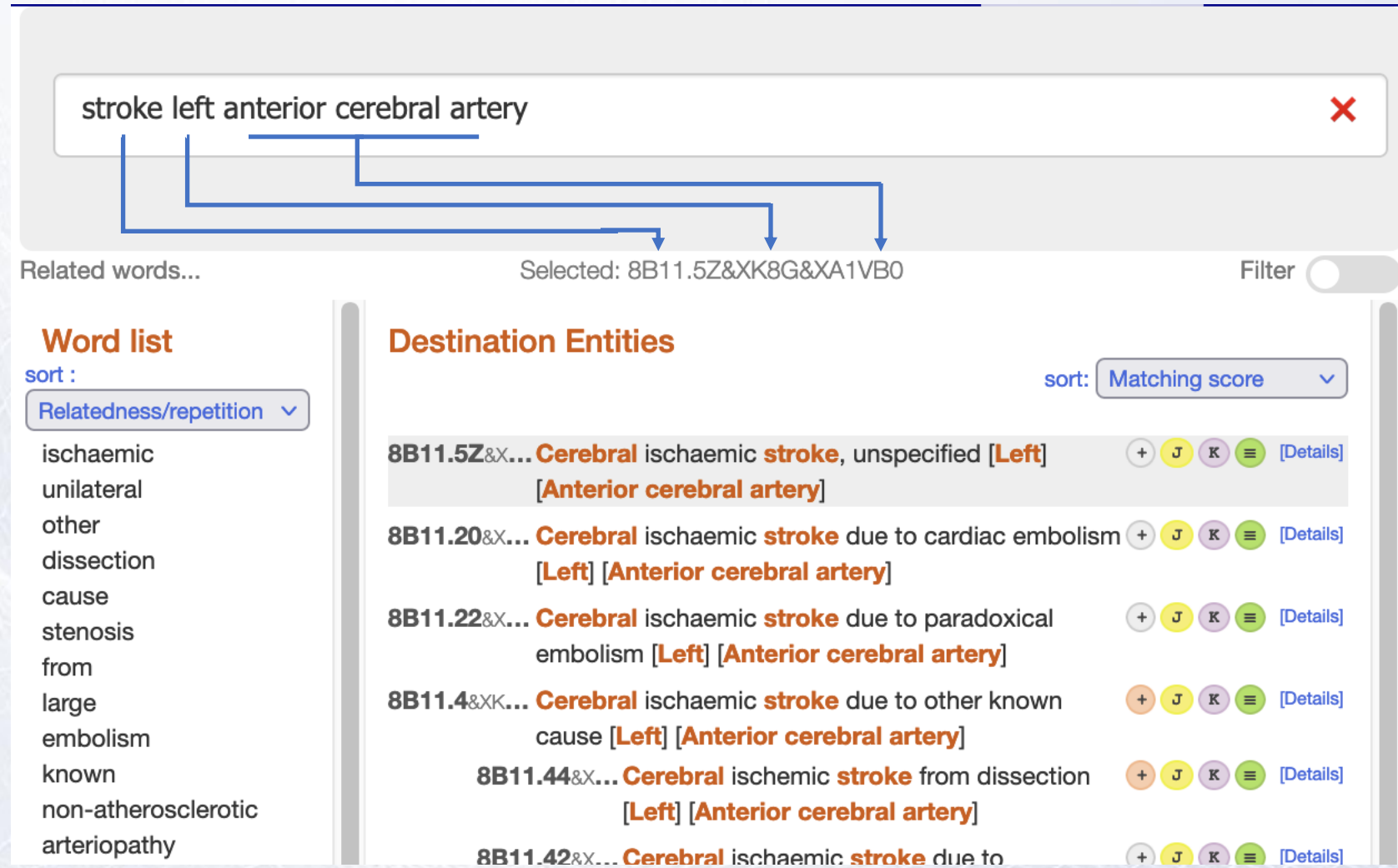
## Has manifestation (use additional code, if desired)

- • ...



# Coding tool provides code combinations

Use the coding tool



The screenshot displays a coding tool interface. At the top, a search bar contains the text "stroke left anterior cerebral artery" with a red 'X' icon on the right. Below the search bar, a diagram shows three blue arrows originating from the search bar and pointing to three different sections: "Related words...", "Selected: 8B11.5Z&XK8G&XA1VB0", and "Filter".

**Related words...**

**Word list**  
sort :  
Relatedness/repetition ▾

- ischaemic
- unilateral
- other
- dissection
- cause
- stenosis
- from
- large
- embolism
- known
- non-atherosclerotic
- arteriopathy

**Destination Entities**  
sort: Matching score ▾

8B11.5Z&X...	Cerebral ischaemic <b>stroke</b> , unspecified [Left] [Anterior cerebral artery]	+ J K ≡ [Details]
8B11.20&X...	Cerebral ischaemic <b>stroke</b> due to cardiac embolism [Left] [Anterior cerebral artery]	+ J K ≡ [Details]
8B11.22&X...	Cerebral ischaemic <b>stroke</b> due to paradoxical embolism [Left] [Anterior cerebral artery]	+ J K ≡ [Details]
8B11.4&XK...	Cerebral ischaemic <b>stroke</b> due to other known cause [Left] [Anterior cerebral artery]	+ J K ≡ [Details]
8B11.44&X...	Cerebral ischemic <b>stroke</b> from dissection [Left] [Anterior cerebral artery]	+ J K ≡ [Details]
8B11.42&X...	Cerebral ischaemic <b>stroke</b> due to	+ J K ≡ [Details]



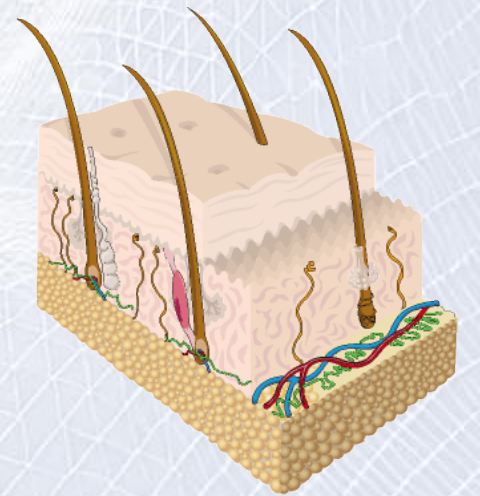
# Chapter 11 - Diseases of the circulatory system

- Heart valve disease no longer dominated by rheumatic fever (now: valve-vitium-etiology)
- New distinct higher level categories
  - Diseases of the myocardium, including extensive subsections on Myocarditis and Cardiomyopathy.
  - Cardiac arrhythmia, including a large new subsection on 'Cardiac arrhythmia associated with genetic disorder' and 'Pacemaker or implantable cardioverter or defibrillator or lead dysfunction'
  - New subsection on Pulmonary Hypertension in the Pulmonary heart disease and diseases of pulmonary circulation section
  - Myocardial infarction: STEMI --- Non-STEMI
- Severity: e.g. Peripheral Artery Disease: Rutherford or Fontaine



## Chapter 14 – Diseases of the skin

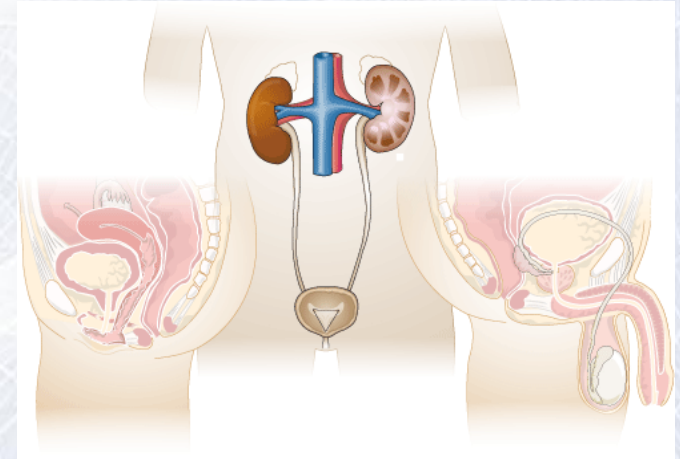
- The general hierarchy of Chapter 14 consists of the following:
  - 1st level Broad category of disease/disorder type
  - 2nd level - Specific disease/disorder type with some anatomical site
  - 3rd level - - Further specificity of disease/disorder type
- Major changes have been made to this chapter adding detail coming from the fusion of the American, British and German dermatological terminologies (last update was made in 1948)





# Chapter 16 – Diseases of the genitourinary system

- To reflect the current scientific understanding for certain genitourinary conditions, additional detail has been included for the following areas:
  - Amenorrhea
  - Ovarian dysfunction
  - Female pelvic pain
  - Endometriosis
  - Adenomyosis
  - Female infertility
  - Male infertility
  - Early pregnancy loss
  - Pregnancy outcomes
  - The Kidney failure section of the classification has been revised (KDIGO)





## Chapter 17 – Conditions related to sexual health

- New chapter in ICD-11 divided into major sections for:
  - Sexual dysfunctions
  - Sexual pain disorders
  - Gender incongruence
- The general hierarchy consists of:
  - 1st level broad category of condition
  - 2nd level - specific type of condition
  - 3rd level - - specific disease/disorder

## Chapter 23 – External causes of morbidity or mortality

- Removed detail (not usually reported)
  - Can be added with code combination with extension codes
- Aligned detail between “intentions”
- Land transport accidents high level now traffic – nontraffic
- **Causes of healthcare related harm**
- Completely overhauled for modern reporting of harm or near failure







# Coding of complications

- ▶ **PL11** Mode of injury or harm associated with a surgical or other medical procedure
- ▶ **PL12** Mode of injury or harm associated with a surgical or other medical device, implant or graft
- ▶ **PL13** Mode of injury or harm associated with exposure to a drug, medicament or biological substance

- ▼ **XE7JV** Osseointegration problem
  - XE94Z** Failure to osseointegrate
  - XE0Z9** Loss of osseointegration
  - XE2K9** Loosening of implant not related to bone-ingrowth
- ▶ **XE0VD** Migration or expulsion of device
- ▶ **XE7Q8** Manufacturing, packaging or shipping problem

- ▼ **PK99** Orthopaedic devices, implants or grafts associated with injury or harm

**PK99.0** Orthopaedic devices associated with injury or harm, diagnostic or monitoring devices

**PK99.1** Orthopaedic devices associated with injury or harm, therapeutic, nonsurgical or rehabilitative devices

**PK99.2** Orthopaedic devices associated with injury or harm, prosthetic or other implants, materials or accessory devices



# ICD-11 Diagnosis code descriptors (examples)

## **Discharge diagnosis types**

XY0Y Main condition

XY7B Main resource condition

XY6E Initial reason for encounter or admission

## **Diagnosis timing**

XY6M Present on admission

XY69 Developed after admission

XY85 Uncertain timing of onset relative to admission

## **Diagnosis timing in relation to surgical procedure**

## **Diagnosis method of confirmation**

## **Diagnosis certainty**

## **Obstetrical diagnosis timing**

## **Encounter descriptors**



输入文本开始搜索

浏览

编码工具

信息

▽ 用于死因与疾病统计的ICD-11

- ▷ **01** 某些感染性疾病或寄生虫病
- ▷ **02** 肿瘤
- ▷ **03** 血液或造血器官疾病
- ▷ **04** 免疫系统疾病
- ▷ **05** 内分泌、营养或代谢疾病
- ▷ **06** 精神、行为或神经发育障碍
- ▷ **07** 睡眠-觉醒障碍
- ▷ **08** 神经系统疾病
- ▷ **09** 视觉系统疾病
- ▷ **10** 耳或乳突疾病

▽ **11** 循环系统疾病

▽ 高血压病

▽ **BA00** 原发性高血压

**BA00.0** 舒张期高血压合并收缩期高血压

**BA00.1** 单纯舒张期高血压

**BA00.2** 单纯收缩期高血压

**JA20.0** 原有特发性高血压并发于妊娠、分娩或产褥期

**BA00.Y** 其他特指的原发性高血压

**BA00.Z** 未特指的原发性高血压

▷ **BA01** 高血压性心脏病

▷ **BA02** 高血压性肾病

## BA00 原发性高血压

基础组件URI: <http://id.who.int/icd/entity/761947693>

编码: BA00

### 描述

原发性高血压占有所有高血压病例的95%，被定义为无法找到继发原因的高血压。

### 包括术语

高血压

### 不包括术语

脑血管病 ([8B00-8B2Z](#))

背景视网膜病变与视网膜血管改变 ([9B78.1](#))

上层中的不包括 [显示全部 \[10\]](#) ▼

### 编码至他处

原有特发性高血压并发于妊娠、分娩或产褥期 ([JA20.0](#))

### 围生期章节中的相关分类

新生儿高血压 ([KB45](#))



# Multilingual

## 用于死因与疾病统计的ICD-11 2025-01

输入文本开始搜索

浏览

编码工具

信息

- ▷ 01 某些感染性疾病或寄生虫病
- ▷ 02 肿瘤
- ▷ 03 血液或造血器官疾病
- ▷ 04 免疫系统疾病
- ▷ 05 内分泌、营养或代谢疾病
- ▷ 06 精神、行为或神经发育障碍
- ▷ 07 睡眠-觉醒障碍
- ▷ 08 神经系统疾病
- ▷ 09 视觉系统疾病
- ▷ 10 耳或乳突疾病
- ▽ 11 循环系统疾病
  - ▽ 高血压病

### BA00 原发性高血压

BA00.0 舒张期高血压合并收缩期高血压

BA00.1 单纯舒张期高血压

BA00.2 单纯收缩期高血压

JA20.0 原有特发性高血压并发于妊娠、分娩或产褥期

BA00.Y 其他特指的原发性高血压

BA00.Z 未特指的原发性高血压

- ▷ BA01 高血压性心脏病
- ▷ BA02 高血压性肾病
- BA03 高血压危象
- ▷ BA04 继发性高血压
- KB45 新生儿高血压

### BA00 原发性高血压

基础组件URI: <http://id.who.int/icd/entity/761947693>

编码: BA00

#### 描述

原发性高血压占有所有高血压病例的95%，被定义为无法找到继发原因的高血压。

#### 包括术语

高血压

#### 不包括术语

脑血管病 ([8B00-8B2Z](#))

背景视网膜病变与视网膜血管改变 ([9B78.1](#))

上层中的不包括 [显示全部 \[10\]](#) ▼

#### 编码至他处

原有特发性高血压并发于妊娠、分娩或产褥期 ([JA20.0](#))

#### 围生期章节中的相关分类

新生儿高血压 ([KB45](#))

### BA00 Essentiell hypertoni

Identifierare (URI).

Kod: BA00

#### Beskrivning

Essentiell (primär) hypertoni, som utgör 95 % av alla fall av hypertoni, definieras som högt blodtryck för vilket en orsak inte kan hittas.

#### Innefattar

högt blodtryck

#### Utesluter

Cerebrovaskulära sjukdomar ([8B00-8B2Z](#))

Bakgrundsretinopati och retinala kärlförändringar ([9B78.1](#))

Uteslutna från ovan nivåer [Visa alla \[10\]](#) ▼

#### Kodas på annan plats

Tidigare konstaterad essentiell hypertoni som komplicerar graviditet, förlossning eller puerperium ([JA20.0](#))

#### Relaterade kategorier i kapitlet foster och nyfödda

Hypertoni hos nyfödd ([KB45](#))





# Multilingual

## ICD-11 för statistik över dödlighet och sjuklighet 2025-01

SV

Skriv för att starta sökningen

UtforskaKodningsverktygInfo

▷ 03 Sjukdomar i blodet och blodbildande organ

▷ 04 Sjukdomar i immunsystemet

▷ 05 Endokrina sjukdomar, näringsrubbningar och ämnesomsättningssjukdomar

▷ 06 Psykiatriska och neuropsykiatriska tillstånd samt beteendesyndrom

▷ 07 Sömnstörningar

▷ 08 Sjukdomar i nervsystemet

▷ 09 Sjukdomar i synsystemet

▷ 10 Sjukdomar i örat och mastoidutskottet

▽ 11 Sjukdomar i cirkulationsorganen

▽ Hypertonisjukdomar

▽ **BA00 Essentiell hypertoni**

**BA00.0** Kombinerad diastolisk och systolisk hypertoni

**BA00.1** Isolerad diastolisk hypertoni

**BA00.2** Isolerad systolisk hypertoni

**JA20.0** Tidigare konstaterad essentiell hypertoni som komplicerar graviditet, förlossning eller puerperium

**BA00.Y** Andra specificerade

**BA00 Essentiell hypertoni**

Identifierare (URI): <http://id.who.int/icd/entity/761947693>

**Kod: BA00**

**Beskrivning**

Essentiell (primär) hypertoni, som utgör 95 % av alla fall av hypertoni, definieras som högt blodtryck för vilket en orsak inte kan hittas.

**Innefattar**

högt blodtryck

**Utesluter**

Cerebrovaskulära sjukdomar ([8B00-8B2Z](#))  
Bakgrundsretinopati och retinala kärlförändringar ([9B78.1](#))

**Uteslutna från ovan nivåer** [Visa alla \[10\]](#) ▼

**Kodas på annan plats**

Tidigare konstaterad essentiell hypertoni som komplicerar graviditet, förlossning eller puerperium ([JA20.0](#))

**Relaterade kategorier i kapitlet foster och nyfödda**

Hypertoni hos nyfödd ([KB45](#))

Språk

Öppna ytterligare språk

Arabic

Chinese

Czech

English

French

Kazakh

Latin

Portuguese

Russian

Slovak

Spanish

✓ Swedish

Turkish

Uzbek

Arabic

Chinese

Czech

English

French

Kazakh

Latin

Portuguese

Russian

Slovak

Spanish

Swedish

Turkish

Uzbek

新生儿高血压 ([KB45](#))



## ICD-11 for Mortality and Morbidity Statistics (Version : 02/2022)

Search  [ Advanced Search ]

Browse

Coding Tool ?

Special Views

Info

### ICD-11 for Mortality and Morbidity Statistics

- ▶ 01 Certain infectious or parasitic diseases
- ▶ 02 Neoplasms
- ▶ 03 Diseases of the blood or blood-forming organs
- ▶ 04 Diseases of the immune system
- ▶ 05 Endocrine, nutritional or metabolic diseases
- ▶ 06 Mental, behavioural or neurodevelopmental disorders
- ▶ 07 Sleep-wake disorders
- ▶ 08 Diseases of the nervous system
- ▶ 09 Diseases of the visual system
- ▶ 10 Diseases of the ear or mastoid process
- ▶ 11 Diseases of the circulatory system
- ▶ 12 Diseases of the respiratory system
- ▶ 13 Diseases of the digestive system
- ▶ 14 Diseases of the skin
- ▶ 15 Diseases of the musculoskeletal system or connective tissue
- ▶ 16 Diseases of the genitourinary system

### ICD-11 for Mortality and Morbidity Statistics

User Guide

Print Versions

ICD-11 Reference Guide

Spreadsheet File

ICD-10 / ICD-11 mapping  
Tables

ICD-11 Maintenance,  
Contributions, Proposals

ICD Home Page

Earlier releases and Update  
history

How to use  
the browser

How to use ICD,  
WHOFIC

Codes for primary  
tabulation

Maps between  
ICD10 and  
ICD-11

Classifications  
and WHO-FIC  
Network

# ICD – Maintenance and Governance

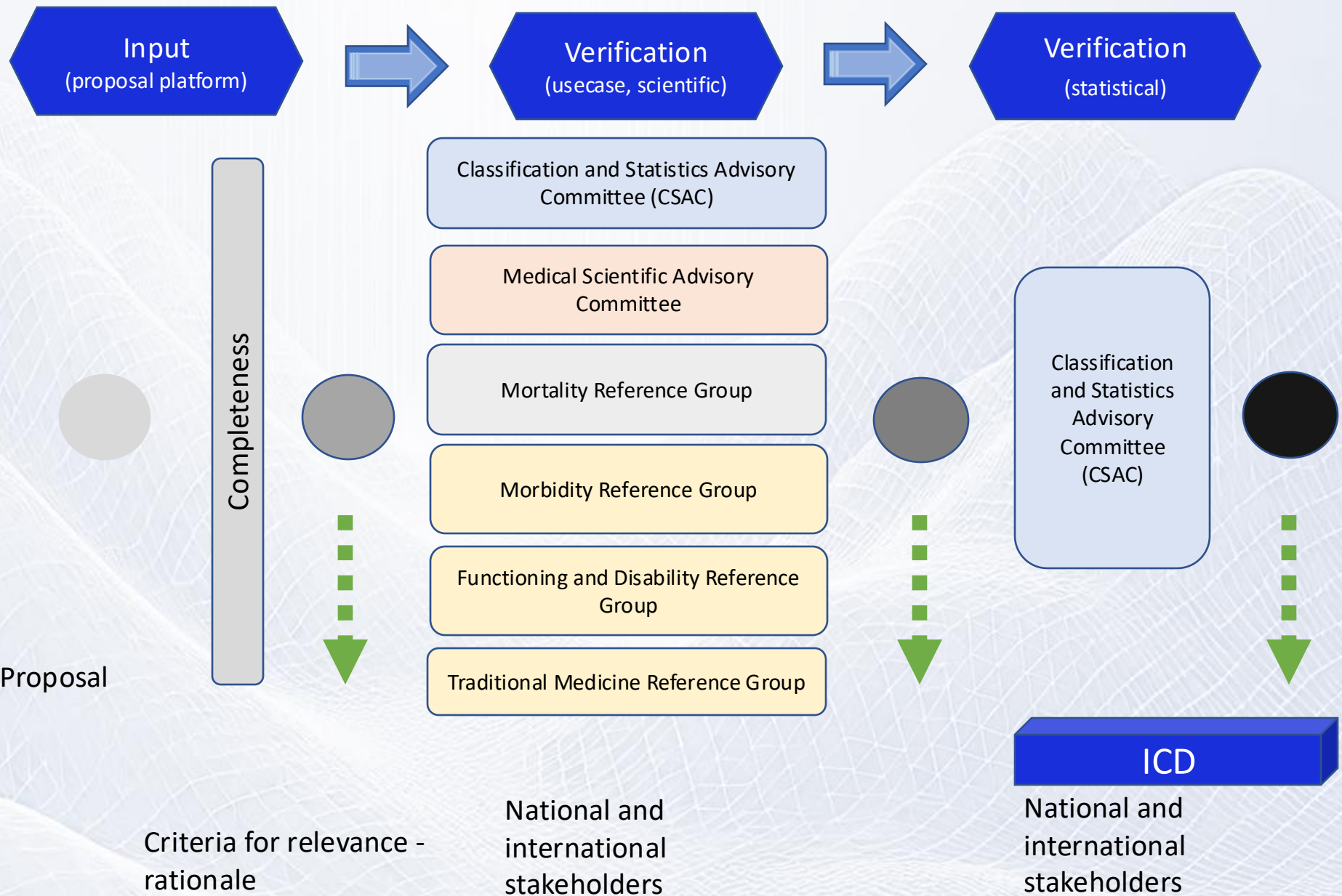
Everybody can  
propose

Proposal

Criteria for relevance -  
rationale

National and  
international  
stakeholders

National and  
international  
stakeholders





# Basic coding rules

01

In principle, codes of all chapters can be combined

02

The first mentioned in postcoordination is the target of the intervention

03

Do not postcoordinate already postcoordinated entries

# Example: one code

One disease => one code

*Fracture of humerus =*

**NC12.3** Fracture of shaft of humerus



# Example:

## Stem code + extension code(s)

*Fracture of right humerus shaft*

**NC12.3 & XK9K**

NC12.3	Fracture of shaft of humerus
XK9K	Right

*Comminuted fracture of right humerus shaft*

**NC12.3 & XK9K & XJ1Z6**

NC12.3	Fracture of shaft of humerus
XK9K	Right
XJ1Z6	Comminuted fracture



# Example:

## Stem code + stem code(s)

*Treatment diabetic retinopathy with unstable type 1 diabetes mellitus*

**1. 9B71.0Z/5A10/ 5A24**

9B71.0Z Diabetic retinopathy, unspecified

5A10 Type 1 diabetes mellitus

(5A24 Uncontrolled or unstable diabetes mellitus)

(Case: Treatment for retinopathy)

# ICD-11 Coding scheme

No confusion with ICD-10

## The chapter numbering:

- Arabic numbers (not roman numerals) 1 - X

## The coding scheme for categories:

- Minimum 4 characters 1A00
- 2 levels of subcategories 1A36.00

## Coding scheme

- Always letter in second position (distinction codes of ICD-10)
- No letter O: avoid confusion with number “zero”
- Only capital L: avoid confusion with number “one”
- First character relates to the chapter number (1-X)
- Residual « other » and «unspecified» code end with «Y» and «Z» respectively

## Special coding scheme for blocks

- For analysis, only
- «Level of Block» + «code of first category»
  - e.g. BlockL2-1A0



# Minimum coding level for international comparison

## **Chapters 1 – 25; 4 characters (before the decimal point)**

The level of combination with extension codes depends on your needs and national rules

Combinations of stem codes are mandatory where one stem code has a “code also” statement

The code combinations of stem codes and extension codes provided by the coding tool are intended for ease of use. However, their use is not limited to these combinations.



# Dagger & Asterisk is abolished !



2016

# Code also – has causing condition

## ▽ Dementia

### ▽ **6D80** Dementia due to Alzheimer disease

**6D80.0** Dementia due to Alzheimer disease with early onset

**6D80.1** Dementia due to Alzheimer disease with late onset

**6D80.2** Alzheimer disease dementia, mixed type, with cerebrovascular disease

**6D80.3** Alzheimer disease dementia, mixed type, with other nonvascular aetiologies

**6D80.Z** Dementia due to Alzheimer disease, onset unknown or unspecified

**6D81** Dementia due to cerebrovascular disease

## Postcoordination ?

**Has causing condition** (code also)

**8A20** Alzheimer disease

**Associated with** (use additional code, if desired.)

search in axis: Associated with

▷ **6D86** Behavioural or psychological disturbances in dementia

**Has severity** (use additional code, if desired.)

**XS5W** Mild

**XS0T** Moderate

**XS25** Severe

**Other postcoordination** ? (use additional code, if desired.)

search in axis: Other postcoordination



# Main condition

**Updated based on 30 years experience with ICD-10 in several countries**

**Main condition:**

Reason for admission, established after assessment at the end of the episode of health care

(cough => diagnostics => pneumonia)



# Morbidity Rules

All rules are explained in the Reference Guide

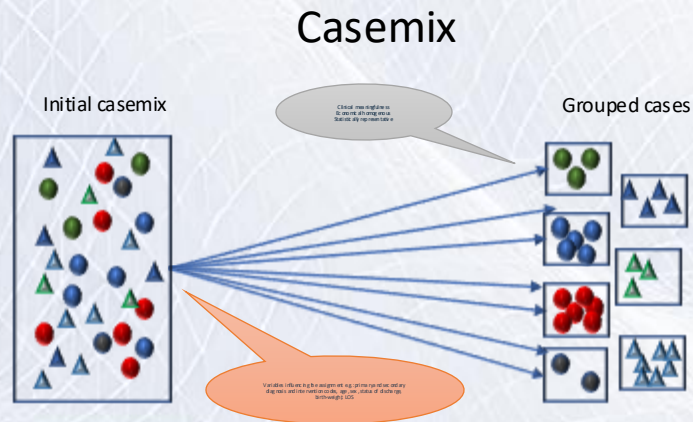
A training is online available at [https:// icd.who.int](https://icd.who.int)

An extensive training is prepared in collaboration with the WHO academy

WHO Webinars provide further guidance

# Tools for data analysis

- Cause of death algorithm and selection rules => DORIS
- DRG based on Nord DRG to work with ICD-11 and ICHI



Source: Adapted from A.Katsaga, 2018



**DORIS**  
WHO Digital Open Rule Integrated Cause of Death Selection

DORIS is a WHO software tool that uses a digital rule base to select the underlying cause of death

**DORIS web version**

DORIS web version

Online version of the WHO software tool which is used for interactive processing of single medical certificates of cause of death

**DORIS desktop version**

DORIS desktop version

Offline version of the WHO software tool which is used for batch processing of multiple medical certificates of cause of death

Descriptions on how to use DORIS versions are included in the DORIS userguide

**More Information**

More information

More information on the DORIS system

Detailed User Guides for the web and desktop versions

Information on using DORIS via ICD-API for software integration



# Tools for data comparison

- Maps ICD-10 ↔ ICD-11
- Special tabulation lists Mortality List and Morbidity List
- WHO List of vaccinable conditions
- Value set platform = create and maintain any special list
  - *EUROSTAT?*

**ICD-11 for Mortality and Morbidity Statistics** 2025-01

Type for starting the search

[Browse](#) [Coding Tool](#) [Info](#)

▽ ICD-11 for Mortality and Morbidity Statistics

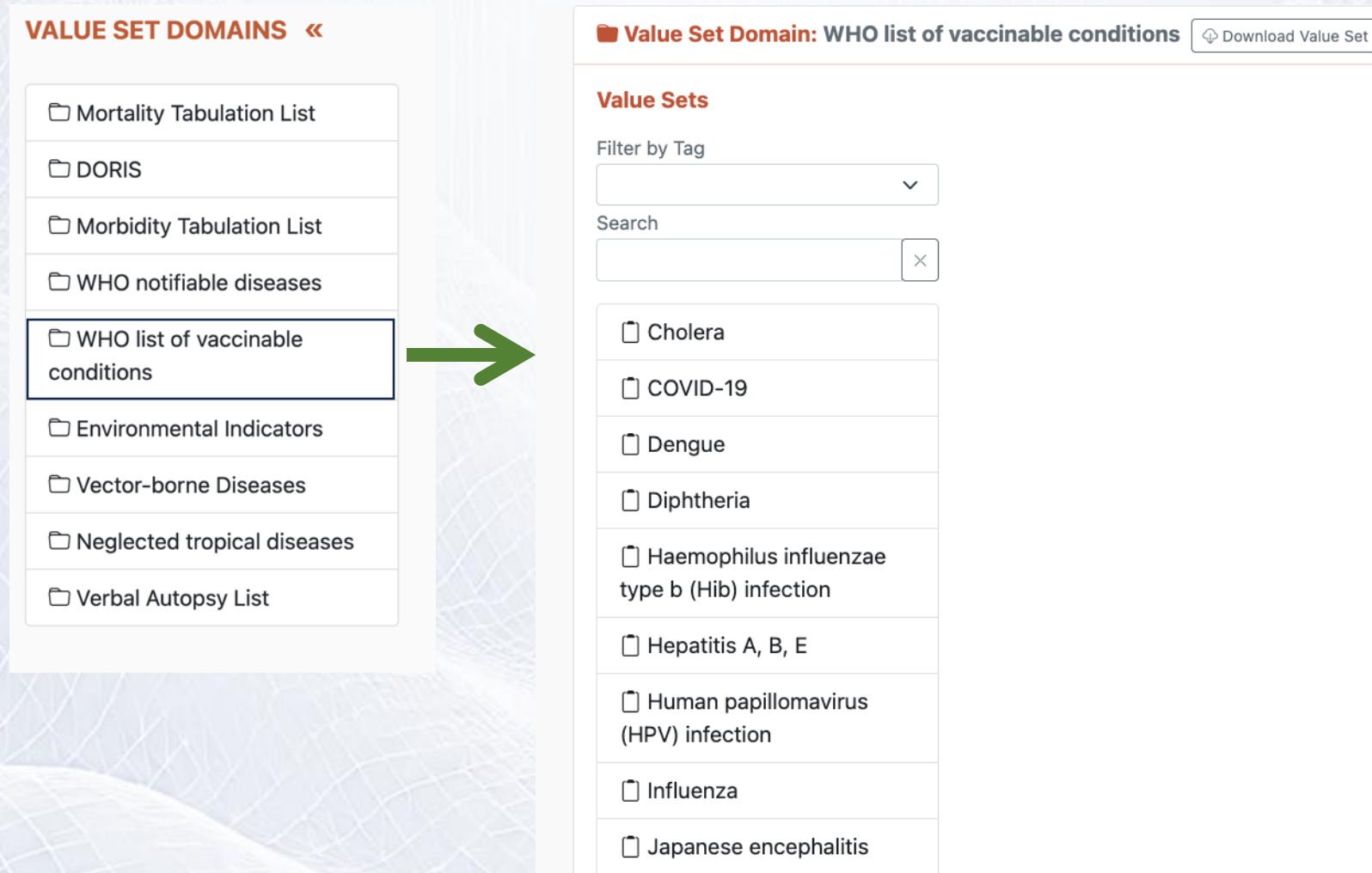
- ▷ **01** Certain infectious or parasitic diseases
- ▷ **02** Neoplasms
- ▷ **03** Diseases of the blood or blood-forming organs
- ▷ **04** Diseases of the immune system
- ▷ **05** Endocrine, nutritional or metabolic diseases
- ▷ **06** Mental, behavioural or neurodevelopmental disorders
- ▷ **07** Sleep-wake disorders
- ▷ **08** Diseases of the nervous system
- ▷ **09** Diseases of the visual system
- ▷ **10** Diseases of the ear or mastoid process
- ▷ **11** Diseases of the circulatory system
- ▷ **12** Diseases of the respiratory system
- ▷ **13** Diseases of the digestive system
- ▷ **14** Diseases of the skin
- ▷ **15** Diseases of the musculoskeletal system or connective tissue
- ▷ **16** Diseases of the genitourinary system
- ▷ **17** Conditions related to sexual health
- ▷ **18** Pregnancy, childbirth or the puerperium
- ▷ **19** Certain conditions originating in the

**ICD-11 for Mortality and Morbidity Statistics**

- User Guide
- Print Versions
- ICD-11 Reference Guide
- Spreadsheet File
- ICD-10 / ICD-11 mapping Tables
- ICD-11 Maintenance, Contributions, Proposals
- ICD-11 Home Page
- All releases and Update history
- Mortality List
- Morbidity List
- WHO list of vaccinable conditions



# Value set platform



The diagram illustrates the navigation process within the Value Set platform. On the left, the 'VALUE SET DOMAINS' menu lists various categories. The 'WHO list of vaccinable conditions' is highlighted with a blue border, and a green arrow points from it to the right-hand panel. The right-hand panel displays the 'Value Set Domain: WHO list of vaccinable conditions' page, which includes a 'Download Value Set' button and a list of specific conditions, each with a checkbox.

**VALUE SET DOMAINS** «

- ☐ Mortality Tabulation List
- ☐ DORIS
- ☐ Morbidity Tabulation List
- ☐ WHO notifiable diseases
- ☐ WHO list of vaccinable conditions**
- ☐ Environmental Indicators
- ☐ Vector-borne Diseases
- ☐ Neglected tropical diseases
- ☐ Verbal Autopsy List

**Value Set Domain: WHO list of vaccinable conditions** [Download Value Set](#)

**Value Sets**

Filter by Tag

Search

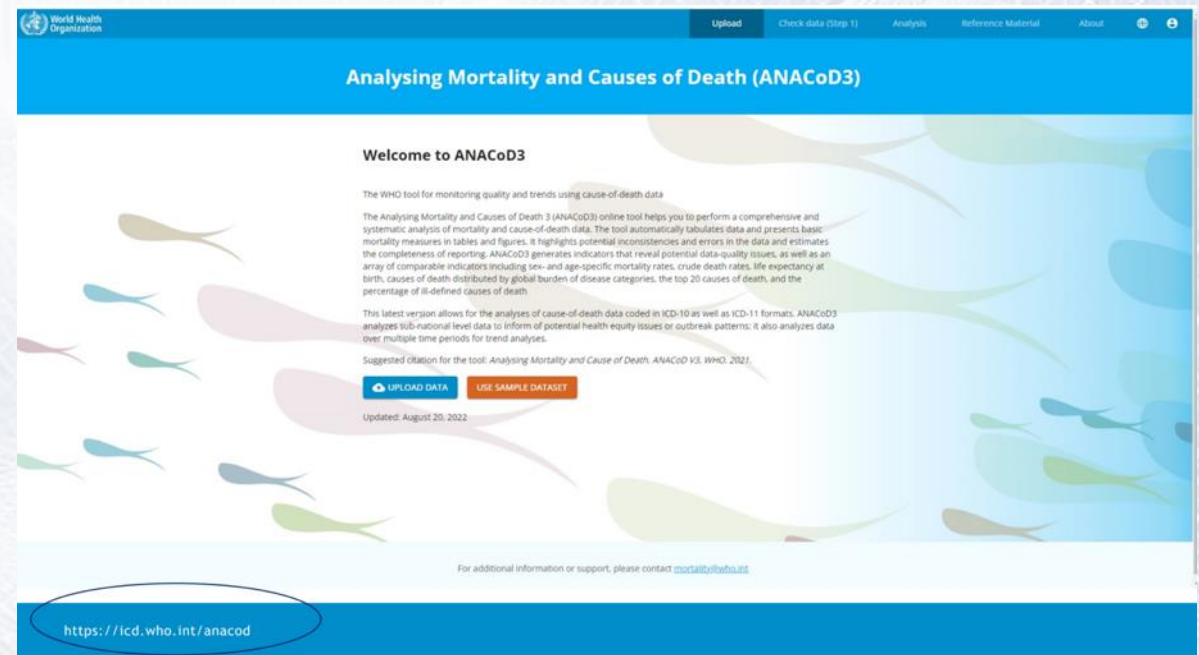
- ☐ Cholera
- ☐ COVID-19
- ☐ Dengue
- ☐ Diphtheria
- ☐ Haemophilus influenzae type b (Hib) infection
- ☐ Hepatitis A, B, E
- ☐ Human papillomavirus (HPV) infection
- ☐ Influenza
- ☐ Japanese encephalitis

# Tools for assessment of data quality

- ANACOD
- CodEdit



## ANACOD-3



# Education



WHOICD11

@WHOICD-11 2 subscribers 5 videos

The Youtube Channel of the International Classification of Diseases and Related H... >

[icd.who.int](https://icd.who.int) and 1 more link

 Subscribed 



HOME

VIDEOS

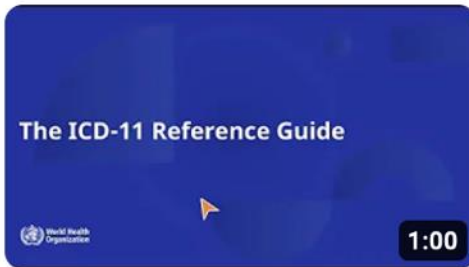
PLAYLISTS

CHANNELS

ABOUT



Videos  Play all



The ICD-11 Reference Guide

1 view • 12 minutes ago



Introduction to the ICD-11  
Homepage



The ICD-11 Proposal Mechanism

2 views • 12 minutes ago



How to do postcoordination in  
ICD-11

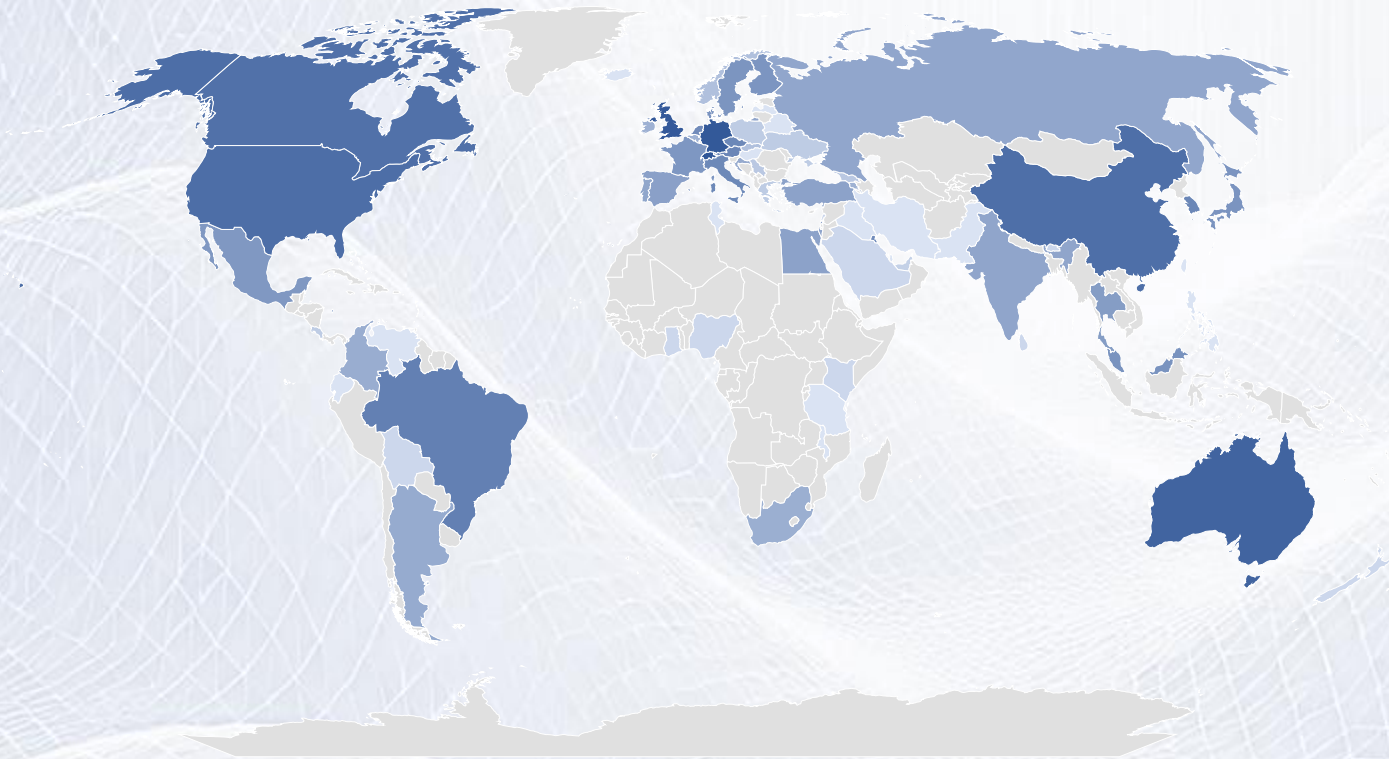


How to use the ICD-11 coding  
tool

<https://www.youtube.com/@WHOICD-11/featured>



# Geographical source of proposals



Engagement from all regions  
and levels of income

The boundaries and names shown and the designations used on this map do not imply the expression of any opinion whatsoever on the part of the World Health Organization concerning the legal status of any country, territory, city or area or of its authorities, or concerning the delimitation of its frontiers or boundaries. Dotted and dashed lines on maps represent approximate border lines for which there may not yet be full agreement.

© Australian Bureau of Statistics, GeoNames, Microsoft, Navinfo, Open Places, OpenStreetMap, Overture Maps Foundation, TomTom, Zenrin

This is not an official map and it may not show the correct borders

# ICD-11

2.000.000 searches per day (1/2025)  
200.000 downloads for offline use

## Review Groups and links

WHO 3 levels  
about 300 directly involved  
70 countries

## Proposals for updates

about 17200 proposals  
already processed

For people

By people

## Proposal Platform

State actors  
Science  
Other NGO  
Individuals  
20.000 users  
99 countries

## Ontology editor (iCAT)

134.000 terms  
85.000 entities  
NLP support more than 2 million  
Manual mode: more than 100 millions

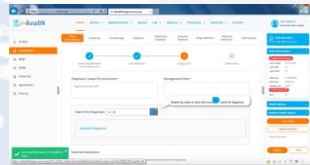
## Numbers per year

Several hundred millions of deaths  
Billions of health encounters  
60% of global health budget

# ICD-11 uses in 2022

Primary care  
Secondary Care  
Tertiary Care

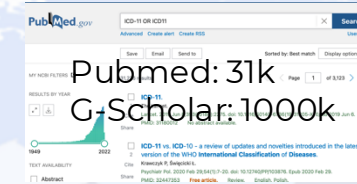
Health record



Death Certificate



Publications



Reimbursement



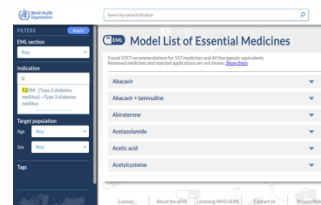
Vaccination certificate



Traditional Medicine

Entity title	National code & level	Frequency (estimated cases per year)	Description	Original language	Transliteration
Worm infestation (Ayurveda)	N	109,056	A TM disorder characterized by stomach (Pituitary) disorders, abdominal pain, and other symptoms. It is caused by the ingestion of contaminated food or water.	English	English
Worm infestation (Siddha)	TK	2,901	A TM disorder characterized by stomach (Pituitary) disorders, abdominal pain, and other symptoms. It is caused by the ingestion of contaminated food or water.	Legs	English
Worm infestation (Unani)	F-95	90,602	A TM disorder characterized by stomach (Pituitary) disorders, abdominal pain, and other symptoms. It is caused by the ingestion of contaminated food or water.	Arabic	Arabic

Essential medicines

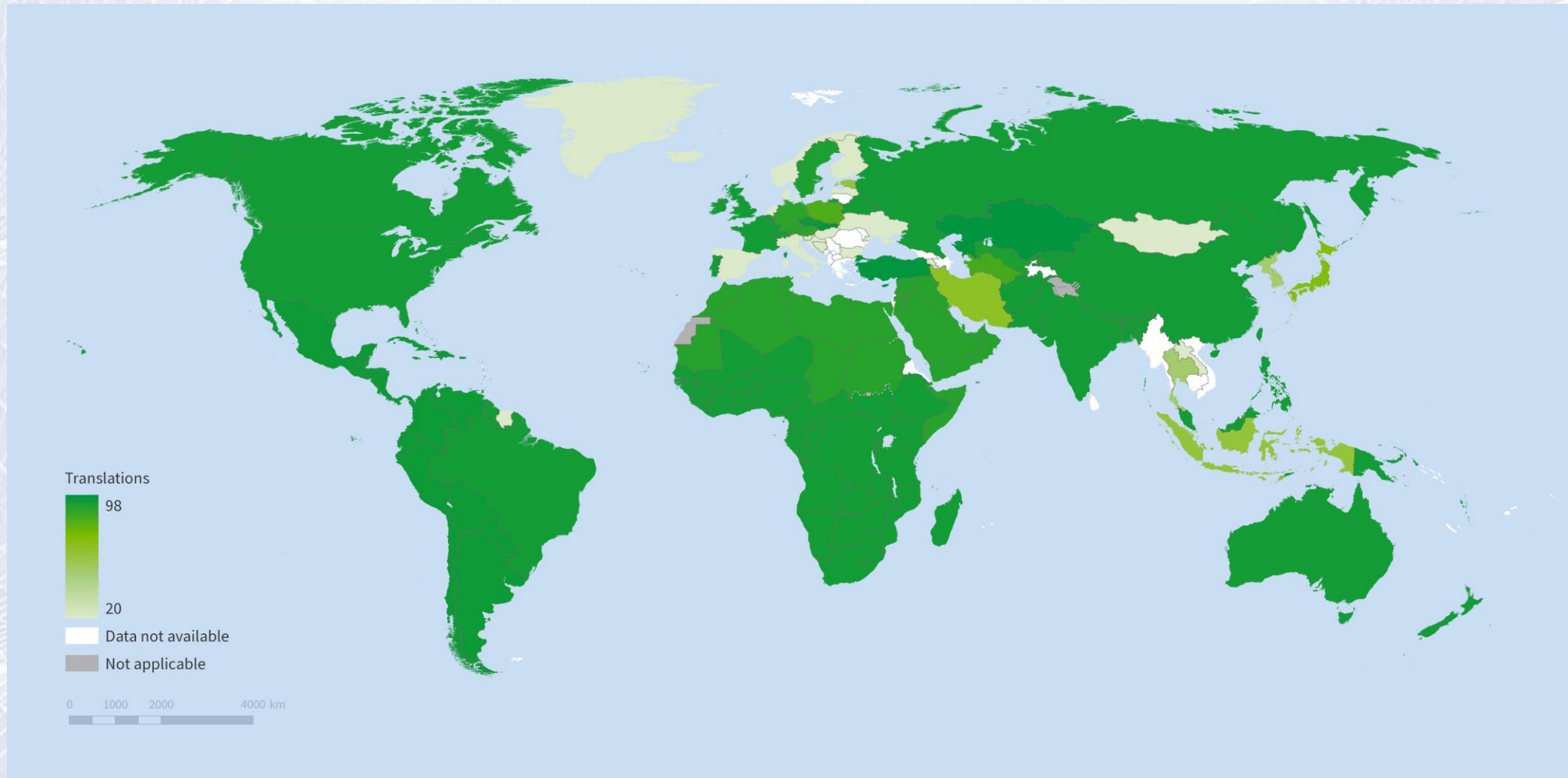


UHC Menu

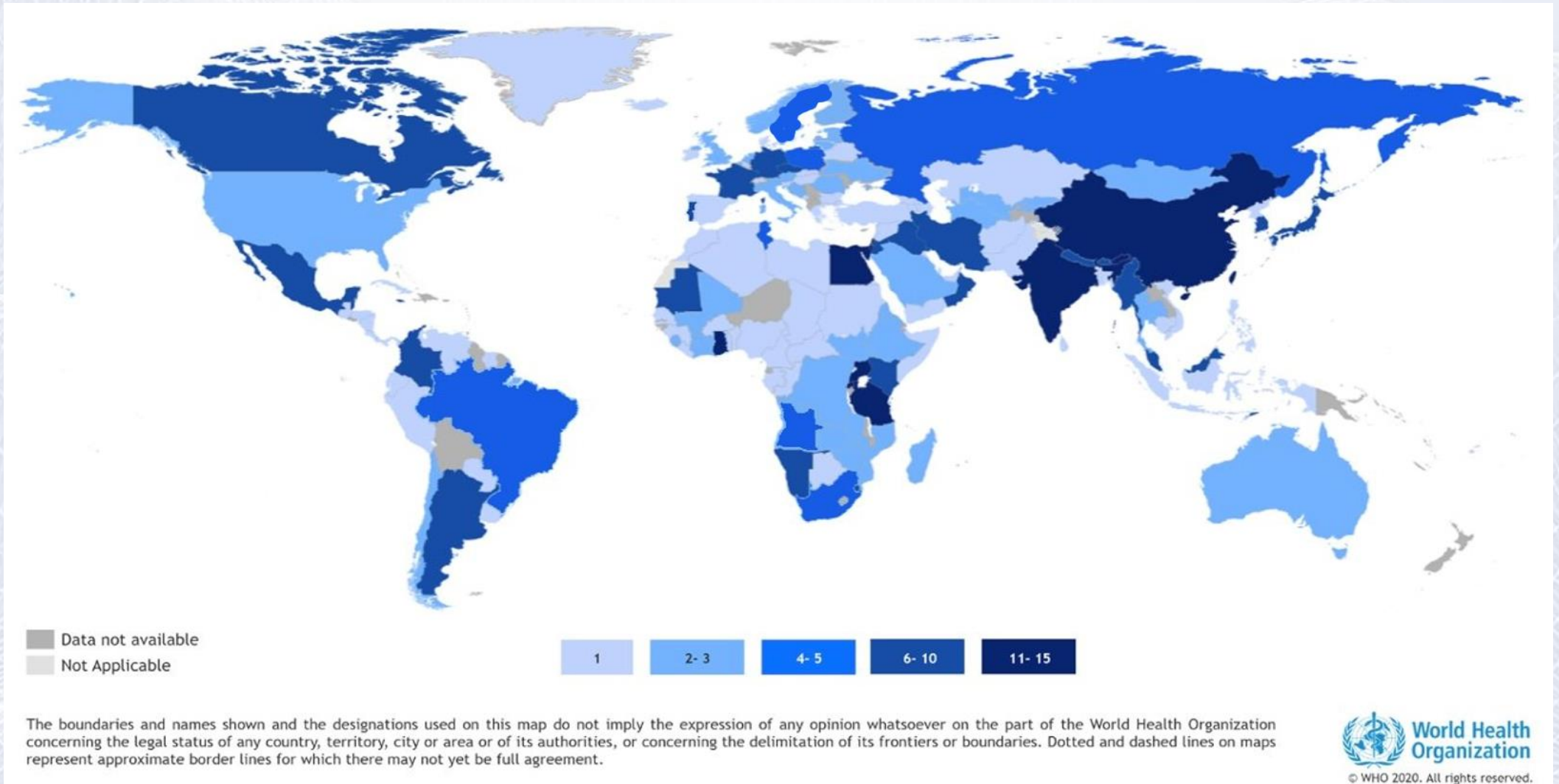




# ICD-11 -Translations coverage



# ICD-11 – Global implementation



# ICD work supported by WHO-FIC Network

## 30 Collaborating Centres - 6 NGO - 40 focal points - 70 countries

ICD-11 home page: <https://icd.who.int>

Translations: [Arabic](#), [Chinese](#), [English](#), [French](#), [Spanish](#), and [Russian](#);

<https://www.who.int/standards/classifications>

To submit questions and suggestions related to WHO-FIC, contact:

- **Your colleagues in the WHO collaborating Centre at the Ministry**
- Direct WHO contacts are: [icd@who.int](mailto:icd@who.int), [whofic@who.int](mailto:whofic@who.int) and [ichi@who.int](mailto:ichi@who.int)

**icd.who.int**



[Facebook](#)



[Twitter](#)

